



Lawn, Garden & Golf

Tires | Wheels | Tubes





OTR Engineered Solutions (OTR)

is your global partner for high-quality off-the-road tires, wheels, assemblies, and accessories. We are proud to supply end-user customers, dealers, and original equipment manufacturers with engineered solutions to meet and exceed common – and uncommon – challenges in such core markets as Agriculture, Construction, Forestry, Industrial, Lawn & Garden, Material Handling, Mining, Powersports, and Specialty Vehicles. But our success is much more than the products we offer. We're a multinational enterprise with more than 1,400 employees throughout 32 facilities worldwide dedicated to supporting you with a full range of high-level services to help you Roll More™.

Lawn, Garden & Golf Products

OTR's product line-up for turf care is the result of many years of experience, innovations, and a hands-on approach that ensures our products get the job done. Whether focusing on productivity and machine utilization, comfort and safety, or value for the money, OTR's team will help you find the right solution.



Table of Contents

Tires

GRASS MASTER	6-8
GRASS MASTER XT	9
HBR LAWN MASTER	10
LITEFOOT	11
LAWN BOSS	12
ZERO-T.....	13
ZERO-T II.....	14
BIG BITE.....	15
REAPER	16
HK45	17
SOFT FOOT	17
ULTRA CHEVRON	18
CHEVRON	18
CHEVRON II	19
TURFMANN	20
TR-34.....	20
GARDEN MASTER	21
LAWN TRAC	21
22 MAG.....	22
XT-41	22
FIELD MASTER.....	23
ROUGH TAMER.....	24
SMOOTH	25
FLEX SMOOTH	26
RIB.....	27
SEMI PNEUMATIC FLEX RIB.....	28
SAWTOOTH	28
350 MAG	29
FAIRWAY MASTER.....	30
PROWLER	31
TEE MASTER.....	32
GC.....	33

Tubes	34-35
--------------------	-------

Wheels

ROTARY CUTTER WHEELS.....	36
UNIVERSAL FIT FRONT WHEELS.....	37
UNIVERSAL FIT REAR WHEELS.....	38-39

NDX Assemblies	40-41
-----------------------------	-------

Services

Mounting & Sequencing	42
TyrLyner®	43

Information & Disclaimers	44-45
--	-------

Tires

Quick Reference Guide

COMMERCIAL:



GRASS MASTER 6-8



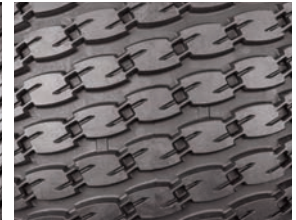
GRASS MASTER XT 9



HBR LAWN MASTER 10



LITEFOOT 11



LAWN BOSS 12



ZERO-T 13



ZERO-T II 14



BIG BITE 15

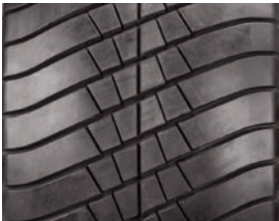


REAPER 16



HK45 17

RESIDENTIAL:



SOFT FOOT 17



ULTRA CHEVRON 18



CHEVRON 18



CHEVRON II 19



TURFMANN 20



TR-34 20

Lawn, Garden & Golf Tires



MULTI-PURPOSE:



GARDEN MASTER 21



LAWN TRAC 21



22 MAG 22



XT-41 22



FIELD MASTER 23

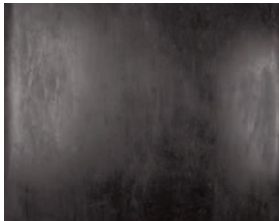
SPECIALTY:



ROUGH TAMER 24



SMOOTH 25



FLEX SMOOTH 26



RIB 27



SEMI PNEUMATIC 28
FLEX RIB



SAWTOOTH 28

GOLF-PERSONAL TRANSIT:



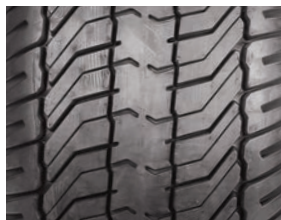
350 MAG 29



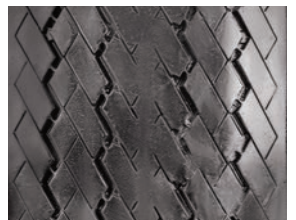
FAIRWAY MASTER 30



PROWLER 31



TEE MASTER 32



GC 33



GRASS MASTER

COMMERCIAL

GRASS MASTER provides exceptional turf-friendly performance for zero-turn, riding and stand-up lawn mowers. Its unique S-shaped tread design optimizes ground contact for superior traction. It won't damage lawns even when making sharp turns and maneuvering on slopes. It's durable, long-lasting and reliable, making it the preferred tire solution for leading OEMs.



Tire Size	Ply	Rated Pressure	Overall Diameter	Section Width	Rim Size	Load Capacity	Part Number
		PSI (KPA)	IN (MM)	IN (MM)	IN (MM)	LBS@MPH (KG@KM/H)	
15X6.00-6	2	14 (97)	14.37 (365.0)	6.22 (158.0)	6 X 4.5 (152.4 X 114.3)	570@10 (258.5@16.1)	T802156006
15X6.00-6	4	14 (97)	14.29 (363.0)	5.98 (151.9)	6 X 4.5 (152.4 X 114.3)	570@10 (258.5@16.1)	T804156006
16X6.50-8	4	28 (193)	15.84 (402.3)	6.42 (163.1)	8 X 5.375 (203.2 X 136.5)	615@10 (279.0@16.1)	T804166508
16X7.50-8	4	22 (152)	16.19 (411.2)	7.03 (178.6)	8 X 5.375 (203.2 X 136.5)	760@10 (344.7@16.1)	T804167508
18X6.50-8	4	28 (193)	17 (431.8)	6.5 (165.1)	8 X 5.375 (203.2 X 136.5)	770@10 (349.3@16.1)	T804186508
18X7.00-8	4	26 (179)	17.81 (452.4)	7.09 (180.1)	8 X 5.375 (203.2 X 136.5)	785@10 (356.1@16.1)	T804187008
18X7.50-8	4	24 (165)	17.91 (454.9)	7.56 (192.0)	8 X 5.375 (203.2 X 136.5)	805@10 (365.1@16.1)	T804187508
18X8.50-8	2	22 (152)	17.91 (454.9)	8.7 (221.0)	8 X 7 (203.2 X 177.8)	825@10 (374.2@16.1)	T804188508
18X8.50-8	4	22 (152)	17.71 (449.4)	8.5 (215.9)	8 X 7 (203.2 X 177.8)	825@10 (374.2@16.1)	T804188508
18X8.50-10	4	22 (152)	17.6 (447.0)	8.41 (213.6)	10 X 7 (254.0 X 177.8)	780@10 (353.8@16.1)	T8041885010
18X9.50-8	4	24 (165)	18.27 (464.1)	9.25 (235.0)	8 X 7 (203.2 X 177.8)	935@10 (424.1@16.1)	T804189508FP
18X9.50-8	4	24 (165)	18.33 (465.6)	9.11 (231.4)	8 X 7 (203.2 X 177.8)	935@10 (424.1@16.1)	T804189508
18X10.50-10	4	22 (152)	17.95 (455.9)	9.92 (252.0)	10 X 8.5 (254.0 X 215.9)	990@10 (449.1@16.1)	T80418105010
18X10.50-10	4	22 (152)	18.31 (465.1)	9.84 (249.9)	10 X 8.5 (254.0 X 215.9)	990@10 (449.1@16.1)	T80418105010FP
20X6.50-10	4	24 (165)	19.6 (497.8)	6.7 (170.2)	10 X 5.5 (254.0 X 139.7)	840@10 (381.0@16.1)	T8042065010
20X8.00-8	4	22 (152)	19.96 (507.0)	8.23 (209.0)	8 X 6.5 (203.2 X 165.1)	965@10 (437.7@16.1)	T804208008
20X8.00-10	4	22 (152)	19.67 (499.6)	7.87 (199.9)	10 X 6.5 (254.0 X 165.1)	850@10 (385.6@16.1)	T8042080010
20X10.00-8	8	35 (241)	19.53 (496.1)	9.88 (251.0)	8 X 7 (203.2 X 177.8)	1,931@10 (875.9@16.1)	T8042010008

NDX™

The Tire That Never Goes Flat

GRASS MASTER is available with OTR's exclusive, patent-pending NDX™ airless technology. See pages 40-41 for details.

Tire Size	Ply	Rated Pressure	Overall Diameter	Section Width	Rim Size	Load Capacity	Part Number
		PSI (KPA)	IN (MM)	IN (MM)	IN (MM)	LBS@MPH (KG@KM/H)	
20X10.50-8	4	22 (152)	19.09 (484.9)	10.31 (261.9)	8 X 7 (203.2 X 177.8)	1,250@10 (567.0@16.1)	T8042010508FP
20X10.50-8	6	24 (165)	19.09 (484.9)	10.31 (261.9)	8 X 7 (203.2 X 177.8)	990@10 (449.1@16.1)	T2010508004
20X10.00-10	4	22 (152)	19.49 (495.0)	9.17 (232.9)	10 X 7 (254.0 X 177.8)	1,170@10 (530.7@16.1)	T80420100010
20X12.00-10	4	20 (138)	19.9 (505.5)	11 (279.4)	10 X 8.5 (254.0 X 215.9)	1,320@10 (598.7@16.1)	T80420120010
22X11.00-10	2	22 (152)	21.1 (535.9)	11.14 (283.0)	10 X 8.5 (254.0 X 215.9)	1,050@10 (476.3@16.1)	T80222110010
22X11.00-10	4	22 (152)	21.5 (546.1)	11.14 (283.0)	10 X 8.5 (254.0 X 215.9)	1,050@10 (476.3@16.1)	T80422110010
23X9.50-12	4	24 (165)	22.95 (582.9)	9.21 (233.9)	12 X 7 (304.8 X 177.8)	1,375@10 (623.7@16.1)	T8042395012FP
23X10.50-12	4	22 (152)	23.02 (584.7)	10.55 (268.0)	12 X 8.5 (304.8 X 215.9)	1,320@10 (598.7@16.1)	T80423105012
24X9.50-12	4	24 (165)	23.54 (597.9)	10.08 (256.0)	12 X 7 (304.8 X 177.8)	1,375@10 (623.7@16.1)	T8042495012FP
24X9.50-14	4	12 (83)	24.06 (611.1)	9.09 (230.9)	14 X 7 (355.6 X 177.8)	1,375@10 (623.7@16.1)	T8042495014
24X12.00-12	4	20 (138)	23.23 (590.0)	12.2 (309.9)	12 X 10.5 (304.8 X 266.7)	1,710@10 (775.6@16.1)	T80424120012FP
24X12.00-12	4	20 (138)	23.86 (606.0)	11.54 (293.1)	12 X 10.5 (304.8 X 266.7)	1,710@10 (775.6@16.1)	T80424120012
24X12.00-14	4	12 (83)	24.09 (611.9)	11.85 (301.0)	14 X 10.5 (355.6 X 266.7)	1,820@10 (825.5@16.1)	T80424120014
25X9.00-12	4	8 (55)	23.9 (607.1)	9.33 (237.0)	12 X 7 (304.8 X 177.8)	1,390@10 (630.5@16.1)	T8042590012
25X10.00-12	4	22 (152)	25.04 (636.0)	10.14 (257.6)	12 X 7 (304.8 X 177.8)	1,610@10 (730.3@16.1)	T80425100012
25X12.00-12	4	20 (138)	25 (635.0)	12.52 (318.0)	12 X 10.5 (304.8 X 266.7)	1,740@10 (789.3@16.1)	T80425120012
26X9.50-12	4	20 (138)	25.35 (643.9)	9.53 (242.1)	12 X 7 (304.8 X 177.8)	1,590@10 (721.2@16.1)	T8042695012FP
26X10.50-12	4	22 (152)	26.1 (662.9)	11.02 (279.9)	12 X 8.5 (304.8 X 215.9)	1,590@10 (721.2@16.1)	T80426105012



Tire Size	Ply	Rated Pressure	Overall Diameter	Section Width	Rim Size	Load Capacity	Part Number
		PSI (KPA)	IN (MM)	IN (MM)	IN (MM)	LBS@MPH (KG@KM/H)	
GRASS MASTER CONTINUED							
26X12.00-12	4	20 (138)	25.08 (637.0)	12.6 (320.0)	12 X 10.5 (304.8 X 266.7)	1,760@10 (798.3@16.1)	T80426120012
26X12.00-12	6	30 (207)	25.43 (645.9)	12.6 (320.0)	12 X 10.5 (304.8 X 266.7)	1,760@10 (798.3@16.1)	T261212016
31X15.50-15	10	60 (414)	30.61 (777.5)	14.83 (376.7)	15 X 13 (381.0 X 330.2)	4,225@10 (1,916.4@16.1)	T801031155015

OTR's GRASS MASTER is a recognized industry-leading tire preferred by dealers and well-known OEMs. It's our BEST all around turf tire.



“ The OTR GRASS MASTER is a very well built tire for lawn care equipment. This tough tire can handle the rigors of commercial equipment being used daily or the personal lawn tractor being used once a week. The tread pattern offers good traction without the hassles of tearing up delicate lawns. We recommend Grass Master as a replacement tire for anyone's lawn care equipment for its longevity, durability, and great overall performance. ”

– Rob Desotel, Cedar Rapids Tire

“ We have been selling the OTR GRASS MASTER for more than fifteen years with absolutely no problems whatsoever. We carry other lines, but with certainty the Grass Master outperforms all other brands. This tire is heavier and gives the customer a much better bang for the buck in performance and durability. In all these years I cannot recall ever having a problem with this product. ”

– Tony Case, Hesselbein Tire Co.

GRASS MASTER XT

COMMERCIAL

The GRASS MASTER XT (GMXT) tire features a turf-friendly design that blends an aggressive tread pattern with improved traction on slopes to help maximize productivity for zero-turn, riding, and stand-on mowers.



Tire Size	Ply	Rated Pressure	Overall Diameter	Section Width	Rim Size	Load Capacity	Part Number
		PSI (KPA)	IN (MM)	IN (MM)	IN (MM)	LBS@MPH (KG@KM/H)	
18X8.50-8	4	22 (152)	17.87 (453.9)	8.58 (217.9)	8 X 7 (203.2 X 177.8)	825@10 (374.2@16.1)	T24804188508
20X10.00-8	4	22 (152)	19.29 (490.0)	9.57 (243.1)	8 X 7 (203.2 X 177.8)	1,200@10 (544.3@16.1)	T248042010008
20X10.00-10	4	22 (152)	19.57 (497.1)	9.17 (232.9)	10 X 7 (254.0 X 177.8)	1,170@10 (530.7@16.1)	T2480420100010
22X11.00-10	4	22 (152)	TBA	TBA	TBA	1,480@10 (671.3@16.1)	T2480422110010
22X12.00-12	4	20 (138)	21.69 (550.9)	11.57 (293.9)	12 X 8.5 (304.8 X 215.9)	1,480@10 (671.3@16.1)	T2480422120012
23X10.50-12	4	20 (138)	22.72 (577.1)	10.43 (264.9)	12 X 8.5 (304.8 X 215.9)	1,320@10 (598.7@16.1)	T2480423105012
24X12.00-12	4	20 (138)	23.74 (603.0)	11.81 (300.0)	10.50 X 12 (266.7 X 304.8)	1,710@10 (775.6@16.1)	T2480424120012
26X12.00-16	4	20 (138)	25.83 (656.1)	11.65 (295.9)	10 X 16 (254.0 X 406.4)	1,820@10 (825.5@16.1)	T2480426120016



HBR LAWN MASTER

COMMERCIAL

HBR LAWN MASTER is a low-profile tire designed to minimize ground compaction. Lugs angled diagonally across the tire's contact patch, coupled with gently sloping shoulders, make this a well-suited tire for residential mowing and turf requiring extra care. Its wide stance improves grip and handling as well.



Tire Size	Ply	Rated Pressure	Overall Diameter	Section Width	Rim Size	Load Capacity	Part Number
		PSI (KPA)	IN (MM)	IN (MM)	IN (MM)	LBS@MPH (KG@KM/H)	
15X6.00-8	2	14 (97)	14.84 (376.9)	5.75 (146.1)	8 X 4.5 (203.2 X 114.3)	355@10 (161.0@16.1)	T8702156008
16X6.00-8	2	14 (97)	15.75 (400.1)	6.26 (159.0)	8 X 4.5 (203.2 X 114.3)	385@10 (174.6@16.1)	T8702166008
18X7.50-10	4	13 (90)	17.91 (454.9)	7.56 (192.0)	10 X 6 (254.0 X 152.4)	735@10 (333.4@16.1)	T87041875010
20X8.50-12	2	10 (69)	19.96 (507.0)	8.74 (222.0)	12 X 7.5 (304.8 X 190.5)	585@10 (265.4@16.1)	T87022085012FP
20X8.50-12	4	10 (69)	19.96 (507.0)	8.74 (222.0)	12 X 7.5 (304.8 X 190.5)	585@10 (265.4@16.1)	T87042085012FP
22X10.00-14	4	22 (152)	22.28 (565.9)	9.61 (244.1)	14 X 8 (355.6 X 203.2)	1,230@10 (557.9@16.1)	T870422100014
24X9.50-14	4	20 (138)	24.13 (612.9)	9.37 (238.0)	14 X 8 (355.6 X 203.2)	1,375@10 (623.7@16.1)	T87042495014
24X12.00-14	4	20 (138)	23.94 (608.1)	12.17 (309.1)	14 X 10.5 (355.6 X 266.7)	1,820@10 (825.5@16.1)	T870424120014
26X12.00-16	4	20 (138)	26.1 (662.9)	12 (304.8)	16 X 10.5 (406.4 X 266.7)	1,820@10 (825.5@16.1)	T870426120016
26X12.00-16	4	20 (138)	26.1 (662.9)	12 (304.8)	16 X 10.5 (406.4 X 266.7)	1,820@10 (825.5@16.1)	T870426120016T

LITEFOOT COMMERCIAL

LITEFOOT delivers good performance and value, with exceptional traction, turf-protection, and durability. It's especially well-suited for smaller turf equipment as an alternative to our premium GRASS MASTER tire.



Tire Size	Ply	Rated Pressure	Overall Diameter	Section Width	Rim Size	Load Capacity	Part Number
		PSI (KPA)	IN (MM)	IN (MM)	IN (MM)	LBS@MPH (KG@KM/H)	
22X8.50-12	4	22 (152)	22.26 (565.4)	8.5 (215.9)	12 X 7 (304.8 X 177.8)	1,100@10 (499.0@16.1)	T4042285012
22X9.50-10	4	20 (138)	22.05 (560.1)	9.61 (244.1)	10 X 7.5 (254.0 X 190.5)	1,200@10 (544.3@16.1)	T4042295010
22X10.00-10	4	20 (138)	22.24 (564.9)	9.53 (242.1)	10 X 8 (254.0 X 203.2)	1,200@10 (544.3@16.1)	T40422100010
22X11.00-10	4	22 (152)	21.6 (548.6)	11.2 (284.5)	10 X 8.5 (254.0 X 215.9)	1,395@10 (632.8@16.1)	T40422110010FP
22.5X10.00-8	4	22 (152)	22.6 (574.0)	10.24 (260.1)	8 X 8 (203.2 X 203.2)	1,390@10 (630.5@16.1)	T40422510008
23X8.50-12	4	22 (152)	22.6 (574.0)	8.24 (209.3)	12 X 7 (304.8 X 177.8)	1,100@10 (499.0@16.1)	T4042385012
23X9.50-12	4	24 (165)	23.07 (586.0)	9.25 (235.0)	12 X 7 (304.8 X 177.8)	1,225@10 (555.7@16.1)	T4042395012
23X10.50-12	4	20 (138)	23.3 (591.8)	9.8 (248.9)	12 X 8.5 (304.8 X 215.9)	1,320@10 (598.7@16.1)	T4042310512
23X10.50-360	6	40 (276)	23.2 (589.3)	9.38 (238.3)	14 X 8 (355.6 X 203.2)	1,320@10 (598.7@16.1)	T406231050360
23X11.00-10	4	22 (152)	21.6 (548.6)	11.2 (284.5)	10 X 8.5 (254.0 X 215.9)	1,480@10 (671.3@16.1)	T40423110010FP
23X12.00-12	4	20 (138)	23.23 (590.0)	12.34 (313.4)	12 X 10.5 (304.8 X 266.7)	1,710@10 (775.6@16.1)	T40423120012
24X9.50-12	4	24 (165)	23.27 (591.1)	9.78 (248.4)	12 X 7 (304.8 X 177.8)	1,375@10 (623.7@16.1)	T4042495012
24X10.00-12	4	24 (165)	TBA	TBA	12 X 7 (304.8 X 177.8)	1,360@10 (616.9@16.1)	T40424100012
24X12.00-12	4	20 (138)	23.23 (590.0)	12.34 (313.4)	12 X 10.5 (304.8 X 266.7)	1,710@10 (775.6@16.1)	T40424120012
26X12.00-12	4	20 (138)	24.8 (629.9)	12.8 (325.1)	12 X 10.5 (304.8 X 266.7)	1,760@10 (798.3@16.1)	T40426120012FP
26X12.00-12	4	20 (138)	25.59 (650.0)	12.8 (325.1)	12 X 10.5 (304.8 X 266.7)	1,760@10 (798.3@16.1)	T40426120012
26X14.00-12	4	18 (124)	25.71 (653.0)	13.74 (349.0)	12 X 10.5 (304.8 X 266.7)	1,500@10 (680.4@16.1)	T40426140012



LAWN BOSS

COMMERCIAL

LAWN BOSS is a multi-purpose tire with a low profile and S-shaped lugs that fit a variety of machines. Its versatility and durability makes the tire a good all-around solution for professionals and consumers.



Tire Size	Ply	Rated Pressure	Overall Diameter	Section Width	Rim Size	Load Capacity	Part Number
		PSI (KPA)	IN (MM)	IN (MM)	IN (MM)	LBS@MPH (KG@KM/H)	
18X8.50-8	4	22 (152)	18.23 (463.0)	8.7 (221.0)	8 X 7 (203.2 X 177.8)	825@10 (374.2@16.1)	T11904188508
20X10.00-8	4	22 (152)	19.84 (503.9)	10.24 (260.1)	8 X 8 (203.2 X 203.2)	1,190@10 (539.8@16.1)	T119042010008
20X10.00-10	4	22 (152)	20.21 (513.3)	10.28 (261.1)	10 X 8 (254.0 X 203.2)	1,170@10 (530.7@16.1)	T1190420100010
20X10.00-12	4	22 (152)	20.16 (512.1)	9.69 (246.1)	12 X 8 (304.8 X 203.2)	1,100@10 (499.0@16.1)	T11904201000012
20X12.00-10	4	20 (138)	20.24 (514.1)	11.73 (297.9)	10 X 9.5 (254.0 X 241.3)	1,320@10 (598.7@16.1)	T1190420120010
22X9.50-10	4	20 (138)	22.2 (563.9)	9.33 (237.0)	10 X 7.5 (254.0 X 190.5)	1,200@10 (544.3@16.1)	T119042295010
22.5X10.00-8	4	22 (152)	22.56 (573.0)	10.24 (260.1)	8 X 8 (203.2 X 203.2)	1,390@10 (630.5@16.1)	T1190422510008
23X10.00-8	4	22 (152)	23.11 (587.0)	10.12 (257.0)	8 X 8 (203.2 X 203.2)	1,430@10 (648.6@16.1)	T119042310008
23X10.50-12	4	24 (165)	23.35 (593.1)	10.87 (276.1)	12 X 8.5 (304.8 X 215.9)	1,570@10 (712.1@16.1)	T1190423105012
24X12.00-10	4	20 (138)	24.06 (611.1)	11.97 (304.0)	10 X 9.5 (254.0 X 241.3)	1,710@10 (775.6@16.1)	T1190424120010
25X12.00-9	4	20 (138)	24.96 (634.0)	12.13 (308.1)	9 X 9.5 (228.6 X 241.3)	1,820@10 (825.5@16.1)	T119042512009

ZERO-T COMMERCIAL

ZERO-T delivers an exceptional all-terrain mowing solution, whether operating on flat ground or slopes, with a unique tread pattern that will not damage grass. It enables mowers to go up to 15% faster than conventional turf tires, while making tighter turns. It's also designed to reduce shock and vibration, with superior puncture resistance as well.



Tire Size	Ply	Rated Pressure	Overall Diameter	Section Width	Rim Size	Load Capacity	Part Number
		PSI (KPA)	IN (MM)	IN (MM)	IN (MM)	LBS@MPH (KG@KM/H)	
13X6.50-6	4	22 (152)	13.15 (334.0)	6.5 (165.1)	6 X 4.5 (152.4 X 114.3)	480@10 (217.7@16.1)	T13304136506
16X6.00-8	4	30 (207)	15.83 (402.1)	5.79 (147.1)	8 X 4.5 (203.2 X 114.3)	615@10 (279.0@16.1)	T13304166008
16X7.50-8	4	22 (152)	15.98 (405.9)	7.6 (193.0)	8 X 5.375 (203.2 X 136.5)	760@10 (344.7@16.1)	T13304167508
16X8.00-8	4	22 (152)	16.2 (411.5)	7.9 (200.7)	8 X 5.375 (203.2 X 136.5)	760@10 (344.7@16.1)	T13304168008
18X8.50-10	4	22 (152)	17.95 (455.9)	8.43 (214.1)	10 X 7 (254.0 X 177.8)	850@10 (385.6@16.1)	T133041885010
18X9.50-10	4	22 (152)	17.68 (449.1)	9.02 (229.1)	10 X 7 (254.0 X 177.8)	940@10 (426.4@16.1)	T133041895010
20X6.50-10	4	28 (193)	20.12 (511.0)	6.81 (173.0)	10 X 5.375 (254.0 X 136.5)	840@10 (381.0@16.1)	T133042065010
20X8.00-10	4	22 (152)	20.24 (514.1)	8.11 (206.0)	10 X 7 (254.0 X 177.8)	850@10 (385.6@16.1)	T133042080010FP
20X10.00-10	4	22 (152)	19.88 (505.0)	10.08 (256.0)	10 X 7 (254.0 X 177.8)	1,170@10 (530.7@16.1)	T1330420100010
20X12.00-10	4	20 (138)	20.03 (508.8)	10.87 (276.1)	10 X 8.5 (254.0 X 215.9)	1,320@10 (598.7@16.1)	T1330420120010
22X11.00-10	4	22 (152)	21.97 (558.0)	11.38 (289.1)	10 X 8.5 (254.0 X 215.9)	1,480@10 (671.3@16.1)	T1330422110010
23X8.50-12	4	22 (152)	22.95 (582.9)	8.19 (208.0)	12 X 7 (304.8 X 177.8)	1,100@10 (499.0@16.1)	T133042385012
23X10.50-12	4	20 (138)	23.07 (586.0)	10.04 (255.0)	12 X 8.5 (304.8 X 215.9)	1,320@10 (598.7@16.1)	T1330423105012
24X8.50-12	4	22 (152)	23.92 (607.6)	8.5 (215.9)	12 X 7 (304.8 X 177.8)	1,280@10 (580.6@16.1)	T133042485012
24X10.50-12	4	24 (165)	24.17 (613.9)	10.79 (274.1)	12 X 8.5 (304.8 X 215.9)	1,560@10 (707.6@16.1)	T1330424105012
24X12.00-10	4	22 (152)	23.91 (607.3)	11.81 (300.0)	10 X 8.5 (254.0 X 215.9)	1,710@10 (775.6@16.1)	T1330424120010
24X12.00-12	4	22 (152)	24.02 (610.1)	12.05 (306.1)	12 X 9.5 (304.8 X 241.3)	1,710@10 (775.6@16.1)	T1330424120012
26X12.00-12	4	20 (138)	25.98 (659.9)	12.01 (305.1)	12 X 9.5 (304.8 X 241.3)	1,760@10 (798.3@16.1)	T1330426120012



ZERO-T II

COMMERCIAL

ZERO-T II is the ideal tire for zero-turn mowers operating on slopes and rough terrain, using a squared shoulder and large voids between lugs to optimize flex and ground contact for improved grip. Its tread pattern ensures safe operation while minimizing vibration, and it features a premium compound that improves puncture resistance.



Tire Size	Ply	Rated Pressure	Overall Diameter	Section Width	Rim Size	Load Capacity	Part Number
		PSI (KPA)	IN (MM)	IN (MM)	IN (MM)	LBS@MPH (KG@KM/H)	
13X6.50-6	6	44 (303)	12.83 (325.9)	6.22 (158.0)	6 X 4.5 (152.4 X 114.3)	480@10 (217.7@16.1)	T16006136506
20X10.00-10	4	22 (152)	20.16 (512.1)	9.72 (246.9)	10 X 7 (254.0 X 177.8)	1,170@10 (530.7@16.1)	T1600420100010
20X8.00-10	4	24 (165)	20.12 (511.0)	8.23 (209.0)	10 X 7 (254.0 X 177.8)	910@10 (412.8@16.1)	T160042080010
22X11.00-10	4	22 (152)	22.09 (561.1)	11.38 (289.1)	10 X 8.5 (254.0 X 215.9)	1,480@10 (671.3@16.1)	T1600422110010
23X10.50-12	4	20 (138)	22.68 (576.1)	10.04 (255.0)	12 X 8.5 (304.8 X 215.9)	1,320@10 (598.7@16.1)	T1600423105012
24X10.50-12	4	24 (165)	23.9 (607.1)	10.47 (265.9)	12 X 8.5 (304.8 X 215.9)	1,650@10 (748.4@16.1)	T1600424105012
24X12.00-12	4	22 (152)	24 (609.6)	11.57 (293.9)	12 X 9.5 (304.8 X 241.3)	1,710@10 (775.6@16.1)	T1600424120012
26X12.00-12	4	20 (138)	25.94 (658.9)	11.81 (300.0)	12 X 9.5 (304.8 X 241.3)	1,760@10 (798.3@16.1)	T1600426120012

NDX™

The Tire That Never Goes Flat

ZERO-T II is available with OTR's exclusive, patent-pending NDX™ airless technology. See pages 40-41 for details.

BIG BITE COMMERCIAL

BIG BITE is a turf tire that's designed for use on zero-turn, ride-on, and stand-on mowers. It features a large footprint that puts more rubber on the road for solid traction and stability. Angled tread blocks and open shoulders work together to promote self-cleaning, which boosts traction. Also, the optimized design lowers rolling resistance to protect delicate turf and grass against damage.



Tire Size	Ply	Rated Pressure	Overall Diameter	Section Width	Rim Size	Load Capacity	Part Number
		PSI (KPA)	IN (MM)	IN (MM)	IN (MM)	LBS@MPH (KG@KM/H)	
16X8.50-8	4	22 (152)	16.06 (407.9)	8.43 (214.1)	8 X 7 (203.2 X 177.8)	715@10 (324.3@16.1)	T17304168508
18X6.50-8	4	23 (159)	17.44 (443.0)	6.34 (161.0)	8 X 5.375 (203.2 X 136.5)	760@10 (344.7@16.1)	T17304186508
18X7.00-8	4	26 (179)	17.76 (451.1)	7.24 (183.9)	8 X 5.375 (203.2 X 136.5)	785@10 (356.1@16.1)	T17304187008
18X8.50-8	4	10 (69)	17.8 (452.1)	8.43 (214.1)	8 X 7 (203.2 X 177.8)	550@10 (249.5@16.1)	T17304188508
18X8.50-10	4	22 (152)	17.36 (440.9)	8.15 (207.0)	10 X 7 (254.0 X 177.8)	825@10 (374.2@16.1)	T173041885010
18X10.50-8	4	24 (165)	17.83 (452.9)	10.24 (260.1)	8 X 8.5 (203.2 X 215.9)	1,140@10 (517.1@16.1)	T173041810508
18X10.50-10	4	22 (152)	17.8 (452.1)	10.04 (255.0)	10 X 8.5 (254.0 X 215.9)	1,050@10 (476.3@16.1)	T1730418105010
20X6.50-10	4	28 (193)	18.66 (474.0)	7.01 (178.1)	10 X 6 (254.0 X 152.4)	880@10 (399.2@16.1)	T173052065010
20X8.00-10	4	24 (165)	19.17 (486.9)	8.03 (204.0)	10 X 6 (254.0 X 152.4)	975@10 (442.3@16.1)	T173042080010
20X10.00-10	4	22 (152)	19.13 (485.9)	9.41 (239.0)	10 X 7 (254.0 X 177.8)	1,170@10 (530.7@16.1)	T1730420100010
20X12.00-10	4	20 (138)	19.61 (498.1)	11.02 (279.9)	10 X 8.5 (254.0 X 215.9)	1,320@10 (598.7@16.1)	T1730420120010
22X9.50-10	4	20 (138)	20.51 (521.0)	9.69 (246.1)	10 X 7.5 (254.0 X 190.5)	1,200@10 (544.3@16.1)	T173042295010
22X11.00-10	4	22 (152)	20.94 (531.9)	11.06 (280.9)	10 X 8.5 (254.0 X 215.9)	1,480@10 (671.3@16.1)	T1730422110010
23X9.50-10	4	20 (138)	21.42 (544.1)	9.65 (245.1)	10 X 7.5 (254.0 X 190.5)	1,280@10 (580.6@16.1)	T173042395010
23X11.00-10	4	22 (152)	20.94 (531.9)	11.06 (280.9)	10 X 8.5 (254.0 X 215.9)	1,570@10 (712.1@16.1)	T1730423110010
23X11.50-12	4	20 (138)	22.64 (575.1)	11.42 (290.1)	12 X 10.5 (304.8 X 266.7)	1,525@10 (691.7@16.1)	T173423115012
24X9.50-12	4	20 (138)	23.58 (598.9)	9.33 (237.0)	12 X 7 (304.8 X 177.8)	1,360@10 (616.9@16.1)	T173042495012
24X12.00-12	4	20 (138)	23.27 (591.1)	11.97 (304.0)	12 X 10.5 (304.8 X 266.7)	1,710@10 (775.6@16.1)	T1730424120012
26X12.00-12	6	30 (207)	25.08 (637.0)	12.44 (316.0)	12 X 10.5 (304.8 X 266.7)	2,435@10 (1,104.5@16.1)	T1730626120012



REAPER

COMMERCIAL

The REAPER tire is designed for use on zero-turn mowers and garden tractors. An optimized tread pattern combined with a wide footprint and proprietary rubber compound construction gives it excellent field traction, stability, and control.



Tire Size	Ply	Rated Pressure	Overall Diameter	Section Width	Rim Size	Load Capacity	Part Number	
		PSI (KPA)	IN (MM)	IN (MM)	IN (MM)	LBS@MPH (KG@KM/H)		
18X8.50-10	4	22 (152)	TBA	TBA	10 X 7 (254.0 X 177.8)	825@10 (374.2@16.1)	T253041885010	
18X9.50-8	4	24 (165)	TBA	TBA	8 X 7 (203.2 X 177.8)	1,040@10 (471.7@16.1)	T25304189508	
20X8.00-8	4	COMING SOON!						T253042080008
20X10.00-8	4	COMING SOON!						T253042010008
20X10.00-10	4	COMING SOON!						T2530420100010
21X7.00-10	4	26 (179)	20.2 (513.1)	6.97 (177.0)	10 X 6 (254.0 X 152.4)	990@10 (449.1@16.1)	T253042170010	
22X10.00-10	4	22 (152)	21.85 (555.0)	10.16 (258.1)	10 X 7 (254.0 X 177.8)	1,360@10 (616.9@16.1)	T2530422100010	
22X11.00-10	4	12 (83)	21.65 (549.9)	10.2 (259.1)	10 X 7 (254.0 X 177.8)	1,480@10 (671.3@16.1)	T2530422110010	
23X9.00-12	4	12 (83)	22.01 (559.1)	9.02 (229.1)	12 X 7 (304.8 X 177.8)	1,200@10 (544.3@16.1)	T253042390012	
23X10.50-12	4	20 (138)	TBA	TBA	12 X 8.5 (304.8 X 215.9)	1,320@10 (598.7@16.1)	T2530423105012	
23X11.00-12	4	20 (138)	22.83 (579.9)	11.34 (288.0)	12 X 8.5 (304.8 X 215.9)	1,710@10 (775.6@16.1)	T2530423110012	
24X12.00-12	4	12 (83)	23.5 (596.9)	11.4 (289.6)	12 X 8.5 (304.8 X 215.9)	1,260@10 (571.5@16.1)	T2530424120012	
26X12.00-12	4	12 (83)	25.39 (644.9)	12.28 (311.9)	12 X 10.5 (304.8 X 266.7)	1,320@10 (598.7@16.1)	T2530426120012	

HK45 COMMERCIAL

HK45 is an all-purpose, non-directional tire featuring a unique geometric lug design that achieves excellent balance between traction—straight line and cornering—and handling on flat and sloped ground. Its sidewalls are reinforced for puncture-resistance and durability.



Tire Size	Ply	Rated Pressure	Overall Diameter	Section Width	Rim Size	Load Capacity	Part Number
		PSI (KPA)	IN (MM)	IN (MM)	IN (MM)	LBS@MPH (KG@KM/H)	
18X11.00-10	4	22 (152)	17.72 (450.1)	9.5 (241.3)	10 X 8.5 (254.0 X 215.9)	1,100@10 (499.0@16.10)	T24450418110010

SOFT FOOT RESIDENTIAL

SOFT FOOT is a turf tire featuring a less aggressive tread with diagonal low-profile lugs on the inside of the tire. Its smooth outer surface area and sharp radius on the shoulder improves grip. It's designed to maximize ground contact with minimal damage to grass, especially when used in residential applications.



Tire Size	Ply	Rated Pressure	Overall Diameter	Section Width	Rim Size	Load Capacity	Part Number
		PSI (KPA)	IN (MM)	IN (MM)	IN (MM)	LBS@MPH (KG@KM/H)	
24X13.00-12	4	18 (124)	24 (609.6)	12.55 (318.8)	12 X 10.50 (304.8 X 266.7)	1,730@10 (784.7@16.1)	T1050424130012



ULTRA CHEVRON

RESIDENTIAL

ULTRA CHEVRON is a premium non-directional tire with ply ratings of 4, 6, and 12 for heavy-duty turf applications. Its high-quality construction ensures excellent durability and long tread life, featuring square shoulders that improve handling and grip—the ideal solution for a wide range of equipment.



Tire Size	Ply	Rated Pressure	Overall Diameter	Section Width	Rim Size	Load Capacity	Part Number
		PSI (KPA)	IN (MM)	IN (MM)	IN (MM)	LBS@MPH (KG@KM/H)	
24X13.00-12	4	18 (124)	22.68 (576.1)	12.87 (326.9)	12 X 10.5 (304.8 X 266.7)	1,730@10 (784.7@16.1)	T560424130012
26X12.00-14	6	32 (221)	26.02 (660.9)	12.28 (311.9)	14 X 9.5 (355.6 X 241.3)	2,470@10 (1,120.4@16.1)	T560626120014
26.5X14.00-12	4	18 (124)	26.42 (671.1)	14.17 (359.9)	12 X 10.5 (304.8 X 266.7)	2,170@10 (984.3@16.1)	T5604265140012
29X14.00-15	4	18 (124)	28.9 (734.1)	13.9 (353.1)	15 X 12 (381.0 X 304.8)	4,210@10 (1,909.6@16.1)	T560429140015
29X14.00-15	12	75 (517)	29.33 (745.0)	13.9 (353.1)	15 X 12 (381.0 X 304.8)	4,210@10 (1,909.6@16.1)	T561229140015

CHEVRON

RESIDENTIAL

CHEVRON is a non-directional tire with a proven tread pattern that is well suited for smaller equipment, providing good traction, stability, durability, and value for the money. It's an excellent utility tire for residential turf care.



Tire Size	Ply	Rated Pressure	Overall Diameter	Section Width	Rim Size	Load Capacity	Part Number
		PSI (KPA)	IN (MM)	IN (MM)	IN (MM)	LBS@MPH (KG@KM/H)	
13X5.00-6	4	22 (152)	12.72 (323.1)	4.69 (119.1)	6 X 3.5 (152.4 X 88.9)	440@10 (199.6@16.1)	T5604135006
13X6.50-6	4	28 (193)	13.27 (337.1)	6.3 (160.0)	6 X 4.5 (152.4 X 114.3)	460@10 (208.7@16.1)	T5604136506
18X8.50-8	4	22 (152)	17.77 (451.4)	8.28 (210.3)	8 X 7 (203.2 X 177.8)	825@10 (374.2@16.1)	T5604188508

CHEVRON II

RESIDENTIAL

CHEVRON II is a non-directional tire with a tapered shoulder that enhances grip, especially on slopes. It's a step up from our Chevron tire, offering improved traction for professional turf care. It's also durable with a long-lasting tread.



Tire Size	Ply	Rated Pressure	Overall Diameter	Section Width	Rim Size	Load Capacity	Part Number
		PSI (KPA)	IN (MM)	IN (MM)	IN (MM)	LBS@MPH (KG@KM/H)	
11X4.00-4	4	46 (317)	11.34 (288.0)	3.94 (100.1)	4 X 3 (101.6 X 76.2)	340@10 (154.2@16.1)	T10104114004
13X5.00-6	2	20 (138)	12.2 (309.9)	5.04 (128.0)	6X4.5 (152.4 X 114.3)	440@10 (199.6@16.1)	TR10102135006
15X6.00-6	4	30 (207)	14.65 (372.1)	6.26 (159.0)	6 X 4.5 (152.4 X 114.3)	565@10 (256.3@16.1)	T10104156006
16X6.50-8	4	28 (193)	15.82 (401.8)	6.44 (163.6)	8 X 5.375 (203.2 X 136.5)	615@10 (279.0@16.1)	T10104166508
16X7.50-8	4	24 (165)	16.57 (420.9)	7.05 (179.1)	8 X 5.375 (203.2 X 136.5)	675@10 (306.2@16.1)	T10104167508
18X6.50-8	4	28 (193)	17.87 (453.9)	7.15 (181.6)	8 X 5.5 (203.2 X 139.7)	770@10 (349.3@16.1)	T10104186508
18X8.50-8	4	22 (152)	17.77 (451.4)	8.28 (210.3)	8 X 7 (203.2 X 177.8)	825@10 (374.2@16.1)	T10104188508
18X9.50-8	4	24 (165)	17.91 (454.9)	9.25 (235.0)	8 X 7 (203.2 X 177.8)	935@10 (424.1@16.1)	T10104189508
20X8.00-8	4	22 (152)	19.88 (505.0)	9.96 (253.0)	8 X 7 (203.2 X 177.8)	1,200@10 (544.3@16.1)	T10104208008
20X10.00-8	4	22 (152)	19.88 (505.0)	9.84 (249.9)	8 X 8 (203.2 X 203.2)	1,200@10 (544.3@16.1)	T101042010008
20X8.00-10	4	24 (165)	20 (508.0)	7.91 (200.9)	10 X 6 (254.0 X 152.4)	850 @10 (385.6@16.1)	T101042080010
20X10.00-10	4	24 (165)	20 (508.0)	7.91 (200.9)	10 X 7 (254.0 X 177.8)	935@10 (424.1@16.1)	T1010420100010



TURFMANN

RESIDENTIAL

TURFMANN features knobby lugs with siped treads that maximize ground contact for improved grip, especially on slopes. This design also improves steering and tracking, and gives the tire a unique look.



Tire Size	Ply	Rated Pressure	Overall Diameter	Section Width	Rim Size	Load Capacity	Part Number
		PSI (KPA)	IN (MM)	IN (MM)	IN (MM)	LBS@MPH (KG@KM/H)	
13X5.00-6	2	20 (138)	12.65 (321.3)	4.65 (118.1)	6 X 3.5 (152.4 X 88.9)	290@10 (131.5@16.1)	TR17202135006EU
16X6.00-8	2	14 (97)	15.9 (403.9)	6.1 (154.9)	8 X 4.375 (203.2 X 111.1)	385@10 (174.6@16.1)	TR17202166008EU
17X8.00-8	2	10 (69)	16.9 (429.3)	7.7 (195.6)	8 X 6.5 (203.2 X 165.1)	465@10 (210.9@16.1)	TR17202178008EU

TR-34

RESIDENTIAL

The TR-34 turf tire is designed for use on farm tractors and ride-on mowers. It features a tight, non-directional tread pattern to optimize traction, tread wear, and ride comfort, while also optimizing performance in a wide range of conditions.



Tire Size	Ply	Rated Pressure	Overall Diameter	Section Width	Rim Size	Load Capacity	Part Number
		PSI (KPA)	IN (MM)	IN (MM)	IN (MM)	LBS@MPH (KG@KM/H)	
16X7.50-8	6	38 (262)	15.9 (403.9)	7.1 (180.3)	8 X 5.375 (203.2 X 136.5)	785@20 (356.1@32.2)	T25006167508
18X8.50-10	6	32 (221)	17.9 (454.7)	8.0 (203.2)	10 X 7 (254.0 X 177.8)	935@20 (424.1@32.2)	T250061885010
24X12.00-12	6	32 (221)	24.1 (612.1)	12.0 (304.8)	12 X 10.5 (304.8 X 266.7)	2,040@20 (925.3@32.2)	T2500624120012
26X12.00-12	6	30 (207)	25.8 (655.3)	12.1 (307.3)	12 X 10.5 (304.8 X 266.7)	2,040@20 (925.3@32.2)	T2500626120012

GARDEN MASTER

MULTI-PURPOSE

GARDEN MASTER is a multi-purpose tire for turf equipment operating in a variety of conditions, including sand and soft- or hard-pack soils. It's a directional tire with an R4 pattern and lug design that improves traction on hard and soft surfaces. It's self-cleaning with a herringbone lug design that ejects mud and debris.



Tire Size	Ply	Rated Pressure	Overall Diameter	Section Width	Rim Size	Load Capacity	Part Number
		PSI (KPA)	IN (MM)	IN (MM)	IN (MM)	LBS@MPH (KG@KM/H)	
18X8.50-10	4	22 (152)	17.76 (451.1)	8.25 (209.6)	10 X 7 (254.0 X 177.8)	780@10 (353.8@216.1)	T99041885010
26X12.00-12	4	20 (138)	26 (660.4)	12 (304.8)	12 X 10.5 (304.8 X 266.7)	1,760@10 (798.3@16.1)	T990426120012

LAWN TRAC

MULTI-PURPOSE

LAWN TRAC provides an open, deep lug design with large footprint that maximizes ground contact for better grip—an excellent all-around solution for operating in muddy fields or on hills. It's self-cleaning with lugs designed to eject mud and debris away from the tire, so there is no slowing down.



Tire Size	Ply	Rated Pressure	Overall Diameter	Section Width	Rim Size	Load Capacity	Part Number
		PSI (KPA)	IN (MM)	IN (MM)	IN (MM)	LBS@MPH (KG@KM/H)	
16X7.50-8	4	24 (165)	16 (406.4)	7.5 (190.5)	8 X 5.375 (203.2 X 136.5)	710@10 (322.1@16.1)	T10004167508
18X8.50-8	4	22 (152)	18.11 (460.0)	8.38 (212.9)	8 X 7 (203.2 X 177.8)	825@10 (374.2@16.1)	T10004188508
18X8.50-10	4	22 (152)	18.1 (459.7)	7.6 (193.0)	10 X 7 (254.0 X 177.8)	780@10 (353.8@16.1)	T100041885010
18X9.50-8	4	22 (152)	18.07 (459.0)	8.03 (204.0)	8 X 7 (203.2 X 177.8)	825@10 (374.2@16.1)	TR10004189508
18X9.50-8	6	30 (207)	18.58 (471.9)	8.07 (205.0)	8 X 7 (203.2 X 177.8)	825@10 (374.2@16.1)	TR10006189508
23X10.50-12	4	20 (138)	22.8 (579.1)	10.5 (266.7)	12 X 8.5 (304.8 X 215.9)	1,320@10 (598.7@16.1)	T1000423105012
24X12.00-12	4	20 (138)	23.94 (608.1)	12.13 (308.1)	12 X 10.5 (304.8 X 266.7)	1,710@10 (775.6@16.1)	T1000424120012
26X10.00-12	4	22 (152)	25.85 (656.6)	10.28 (261.1)	12 X 8.5 (304.8 X 215.9)	1,710@10 (775.6@16.1)	T1000426100012
26X12.00-12	4	20 (138)	25.98 (659.9)	12.28 (311.9)	12 X 10.5 (304.8 X 266.7)	1,760@10 (798.3@16.1)	T1000426120012



22 MAG

MULTI-PURPOSE

22 MAG features a smooth bar tread to enhance traction, especially on rough terrain, as well as wet and muddy conditions. It also provides more load-bearing capacity for vehicles and machines doing heavy-duty jobs.



Tire Size	Ply	Rated Pressure	Overall Diameter	Section Width	Rim Size	Load Capacity	Part Number
		PSI (KPA)	IN (MM)	IN (MM)	IN (MM)	LBS@MPH (KG@KM/H)	
20X8.00-10	4	22 (152)	19.72 (500.9)	7.76 (197.1)	10 X 6 (254.0 X 152.4)	1,025@10 (464.9@16.1)	T2404222080010
22X11.00-8	4	22 (152)	21.2 (538.5)	10.9 (276.9)	8 X 8.5 (203.2 X 215.9)	1,390@10 (630.5@16.1)	T240222111008
22X11.00-10	4	22 (152)	22 (558.8)	10.8 (274.3)	10 X 8.5 (254.0 X 215.9)	1,480@10 (671.3@16.1)	T24042222110010
22.5X11.00-10	4	22 (152)	22.2 (563.9)	10.9 (276.9)	10 X 8.5 (254.0 X 215.9)	1,520@10 (689.5@16.1)	T240422225110010
23X10.50-12	4	24 (165)	23.3 (591.8)	10.67 (271.0)	12 X 8.5 (304.8 X 215.9)	1,320@10 (598.7@16.1)	T24042223105012
24X12.00-12	4	20 (138)	24.37 (619.0)	12.28 (311.9)	12 X 9.5 (304.8 X 241.3)	1,710@10 (775.6@16.1)	T24042224120012

XT-41

MULTI-PURPOSE

XT-41 is a game-changing “hybrid” tire blending R4 and R1 tread patterns for maximum flexibility when operating on- or off-road. Its high tread-to-void ratio improves wear when driving on asphalt with an overlapping centerline tread design for improved ride comfort. It also features rock ejectors in between lugs to ensure high performance when operating turf equipment in wet or muddy conditions. (This tire also works in UTV and agricultural applications.)



Tire Size	Ply	Rated Pressure	Overall Diameter	Section Width	Rim Size	Load Capacity	Part Number
		PSI (KPA)	IN (MM)	IN (MM)	IN (MM)	LBS@MPH (KG@KM/H)	
18X8.50-10	4	22 (152)	17.92 (455.2)	7.88 (200.2)	10 X 7 (254.0 X 177.8)	780@10 (353.8@16.1)	T198041885010
18X8.50-10	8	44 (303)	17.87 (453.9)	8.11 (206.0)	10 X 7 (254.0 X 177.8)	1,230@10 (557.9@16.1)	T198081885010
26X12.00-12	4	20 (138)	26.07 (662.2)	11.84 (300.7)	12 X 10.5 (304.8 X 266.7)	1,760@10 (798.3@16.1)	T1980426120012

FIELD MASTER

MULTI-PURPOSE

FIELD MASTER provides a more aggressive tread with angled lugs to enhance grip on rough terrain. It's wide stance and reinforced casing ensure stability and durability, providing a flexible solution for applications such as heavy-duty turf and agriculture, delivering a good overall value.



Tire Size	Ply	Rated Pressure	Overall Diameter	Section Width	Rim Size	Load Capacity	Part Number
		PSI (KPA)	IN (MM)	IN (MM)	IN (MM)	LBS@MPH (KG@KM/H)	
13X5.00-6	4	20 (138)	13 (330.2)	4.7 (119.4)	6 X 3.25 (152.4 X 82.6)	295@10 (133.8@16.1)	T10404135006
16X6.50-8	6	28 (193)	16.4 (416.6)	6.8 (172.7)	8 X 5.375 (203.2 X 136.5)	615@10 (279.0@16.1)	T10406166508
18X9.50-8	2	12 (83)	17.91 (454.9)	8.74 (222.0)	8 X 7 (203.2 X 177.8)	935@10 (424.1@16.1)	T10402189508
18X9.50-8	4	12 (83)	18.66 (474.0)	8.66 (220.0)	8 X 7 (203.2 X 177.8)	935@10 (424.1@16.1)	T10404189508
20X10.00-8	4	22 (152)	20.3 (515.6)	9.5 (241.3)	8 X 7 (203.2 X 177.8)	1,200@10 (544.3@16.1)	T104042010008
23X10.50-12	6	22 (152)	23.23 (590.0)	10.24 (260.1)	12 X 8.5 (304.8 X 215.9)	1,570@10 (712.1@16.1)	T1040623105012
23X10.50-12	8	32 (221)	23.23 (590.0)	10.24 (260.1)	12 X 8.5 (304.8 X 215.9)	1,760@10 (798.3@16.1)	T1040823100012
26X12.00-12	4	20 (138)	26.18 (665.0)	11.81 (300.0)	12 X 10.5 (304.8 X 266.7)	1,780@10 (807.4@16.1)	T1040426120012
26X12.00-12	8	50 (345)	26 (660.4)	12 (304.8)	12 X 10.5 (304.8 X 266.7)	3,020@10 (1,369.8@16.1)	T104082610012



ROUGH TAMER

SPECIALTY

ROUGH TAMER provides an aggressive tread and unique lug pattern designed to ensure grip and traction. Ground contact is evenly dispersed to protect grass.



Tire Size	Ply	Rated Pressure	Overall Diameter	Section Width	Rim Size	Load Capacity	Part Number
		PSI (KPA)	IN (MM)	IN (MM)	IN (MM)	LBS@MPH (KG@KM/H)	
4.10/3.50-4	2	24 (165)	10.2 (259.1)	3.66 (93.0)	4 X 2.25 (101.6 X 57.2)	340@10 (154.2@16.1)	T116024103504
4.10/3.50-4	4	50 (345)	10.31 (261.9)	3.74 (95.0)	4 X 2.25 (101.6 X 57.2)	340@10 (154.2@16.1)	T116044103504
4.10/3.50-5	2	24 (165)	11.1 (281.9)	3.66 (93.0)	5 X 2.25 (127.0 X 57.2)	340@10 (154.2@16.1)	T116024103505
4.10/3.50-5	4	50 (345)	11.1 (281.9)	3.66 (93.0)	5 X 2.25 (127.0 X 57.2)	340@10 (154.2@16.1)	T116044103505
4.10/3.50-6	2	24 (165)	12.28 (311.9)	3.94 (100.1)	6 X 2.25 (152.4 X 57.2)	290@10 (131.5@16.1)	T116024103506
4.10/3.50-6	4	50 (345)	12.48 (317.0)	3.94 (100.1)	6 X 2.25 (152.4 X 57.2)	290@10 (131.5@16.1)	T116044103506
4.80/4.00-8	4	42 (290)	16.61 (421.9)	4.65 (118.1)	8 X 2.5 (203.2 X 63.5)	500@5 (226.8@8.0)	T116044804008
16X6.50-8	2	14 (97)	15.87 (403.1)	6.56 (166.6)	8 X 5.375 (203.2 X 136.5)	615@10 (279.0@16.1)	T11602166508
16X6.50-8	4	28 (193)	16.18 (411.0)	6.57 (166.9)	8 X 5.375 (203.2 X 136.5)	615@10 (279.0@16.1)	T11604166508

SMOOTH SPECIALTY

SMOOTH is wide tire with exceptional ground contact for improved stability and maneuverability with no risk of damaging lawns. Sidewall construction is robust, enhancing puncture resistance and long life.



Tire Size	Ply	Rated Pressure	Overall Diameter	Section Width	Rim Size	Load Capacity	Part Number
		PSI (KPA)	IN (MM)	IN (MM)	IN (MM)	LBS@MPH (KG@KM/H)	
4.10/3.50-4	4	30 (207)	10.63 (270.0)	3.94 (100.1)	4 X 2.25 (101.6 X 57.2)	340@10 (154.2@16.1)	T55044103504
9X3.50-4	4	50 (345)	9.06 (230.1)	3.43 (87.1)	4 X 2.5 (101.6 X 63.5)	352@10 (159.7@16.1)	T550493504
9X5.00-5	4	29 (200)	9.13 (231.9)	4.13 (104.9)	5 X 3 (127.0 X 76.2)	155@10 (70.3@16.1)	T550495005
11X4.00-5	4	46 (317)	10.85 (275.6)	3.9 (99.1)	5 X 2.5 (127.0 X 63.5)	330@10 (149.7@16.1)	T5504114005
11X5.00-5	4	46 (317)	11.14 (283.0)	4.49 (114.0)	5 X 3 (127.0 X 76.2)	355@10 (161.0@16.1)	T5504115005
11X6.00-5	4	29 (200)	10.94 (277.9)	5.18 (131.6)	5 X 3 (127.0 X 76.2)	430@10 (195.0@16.1)	T1165003
13X5.00-6	4	40 (276)	12.6 (320.0)	4.72 (119.9)	6 X 3.25 (152.4 X 82.6)	440@10 (199.6@16.1)	T5504135006
13X6.50-6	4	28 (193)	12.72 (323.1)	6.12 (155.4)	6 X 5 (152.4 X 127.0)	460@10 (208.7@16.1)	T5504136506
13X8.00-6	4	22 (152)	12.83 (325.9)	7.97 (202.4)	7 X 6 (177.8 X 152.4)	440@10 (199.6@16.1)	T5504138006
15X6.00-6	8	52 (359)	14.8 (375.9)	6.3 (160.0)	6 X 4.50 (152.4 X 114.3)	565@10 (256.3@16.1)	T5508156006
16X6.50-8	4	28 (193)	15.79 (401.1)	6.65 (168.9)	8 X 5.375 (203.2 X 136.5)	615@10 (279.0@16.1)	T5504166508
18X9.50-8	4	22 (152)	17.7 (449.6)	8.8 (223.5)	8 X 7 (203.2 X 177.8)	935@10 (424.1@16.1)	T5504189508
18X10.50-8	4	22 (152)	18.58 (471.9)	9.88 (251.0)	8 X 8 (203.2 X 203.2)	990@10 (449.1@16.1)	T55041810508
18X10.50-10	4	22 (152)	18.85 (478.8)	9.91 (251.7)	10 X 8.5 (254.0 X 215.9)	990@10 (449.1@16.1)	T550418105010
20X10.00-10	2	12 (83)	19.5 (495.3)	9.8 (248.9)	10 X 8.5 (254.0 X 215.9)	815@10 (369.7@16.1)	T550220100010
22X10.00-14	4	22 (152)	21.77 (553.0)	9.84 (249.9)	14 X 8 (355.6 X 203.2)	1,230@10 (557.9@16.1)	T550422100014



FLEX SMOOTH

SPECIALTY

FLEX SMOOTH is a heavy-duty semi-pneumatic tire designed to minimize turf damage. It features a wide contact patch and smooth tread for stability and reduced vibration. Crowned versions improve grip on gentle slopes as well.



Tire Size	Ply	Rated Pressure	Overall Diameter	Section Width	Rim Size	Load Capacity	Part Number
		PSI (KPA)	IN (MM)	IN (MM)	IN (MM)	LBS@MPH (KG@KM/H)	
4.10/3.50-4	N/A	N/A	10.4 (264.2)	3.4 (86.4)	4 X 2.25 (101.6 X 57.2)	340@10 (154.2@16.1)	TBA
4.80-8/3.75	N/A	N/A	16.7 (424.2)	4.8 (121.9)	8 X 3.75 (203.2 X 95.3)	200@10 (90.7@16.1)	TSPS4808
7.10-16	N/A	N/A	16 (406.4)	7.1 (180.3)	TBA	TBA	TSPS71016
8X3.00-4	N/A	N/A	8.41 (213.6)	2.98 (75.7)	4 X 2.25 (101.6 X 57.2)	TBA	TSPS83004
9X3.50-4	N/A	N/A	9.07 (230.4)	3.23 (82.0)	4 X 2.25 (101.6 X 57.2)	260@10 (117.9@16.1)	TSPS93504225
11X4.00-5	N/A	N/A	10.87 (276.1)	4.09 (130.9)	5 X 3.25 (127.0 X 82.6)	325@10 (147.4@16.1)	TSPS114005
11X4.00-5/3.25	N/A	N/A	10.87 (276.1)	4.09 (103.9)	5 X 3.25 (127.0 X 82.6)	325@10 (147.4@16.1)	TSPS114005
11X6.00-5	N/A	N/A	11.41 (289.8)	5.12 (130.0)	5 X 3 (127.0 X 76.2)	365@10 (165.6@16.1)	TSPS1165005
12X3.50-6	N/A	N/A	12 (304.8)	3.5 (88.9)	6 X 3 (152.4 X 76.2)	500@10 (226.8@16.1)	700707953
13X5.00-6	N/A	N/A	12.32 (312.9)	4.67 (118.6)	6 X 3.25 (152.4 X 82.6)	460@10 (208.7@16.1)	TSPS135006325
13X6.50-6 CROWN FLAT TOP	N/A	N/A	12.68 (322.1)	5.81 (147.6)	6 X 4.5 (152.4 X 114.3)	440@10 (199.6@16.1)	TSPSC136506450
15X6.00-6	N/A	N/A	14.14 (359.2)	5.81 (147.6)	6 X 4.5 (152.4 X 114.3)	570@10 (258.5@16.1)	TSPS156006450
15X6.00-6 CROWN FLAT TOP	N/A	N/A	14.13 (358.9)	5.94 (150.9)	6 X 4.5 (152.4 X 114.3)	570@10 (258.5@16.1)	TSPS156006R
15X6.50-8	N/A	N/A	14.96 (380.0)	5.91 (150.1)	8 X 4.5 (203.2 X 114.3)	260@10 (117.9@16.1)	TSPS156508
15X6.50-8 CROWN FLAT TOP	N/A	N/A	14.98 (380.5)	5.91 (150.1)	8 X 4.5 (203.2 X 114.3)	330@10 (149.7@16.1)	TSPSC156508

RIB SPECIALTY

RIB is a grooved tire with excellent traction and durability designed for a wide range of turf applications, including rotary cutters. Its circumferential ribs and broad shoulders enhance operation in wet conditions with a low-impact design that minimizes turf damage.



Tire Size	Ply	Rated Pressure	Overall Diameter	Section Width	Rim Size	Load Capacity	Part Number
		PSI (KPA)	IN (MM)	IN (MM)	IN (MM)	LBS@MPH (KG@KM/H)	
11X4.00-5	4	46 (317)	10.7 (271.8)	4.2 (106.7)	5 X 3 (127.0 X 76.2)	210@10 (95.3@16.1)	T1504114005
13X5.00-6	4	40 (276)	12.72 (323.1)	4.69 (119.1)	6 X 3.5 (152.4 X 88.9)	440@10 (199.6@16.1)	T1504135006
13X6.50-6	4	28 (193)	13 (330.2)	6.4 (162.6)	6 X 4.5 (152.4 X 114.3)	480@10 (217.7@16.1)	T1504136506
15X6.00-6	4	30 (207)	14.21 (360.9)	6.02 (152.9)	6 X 4.5 (152.4 X 114.3)	565@10 (256.3@16.1)	T1504156006
16X6.50-8	4	28 (193)	16.1 (408.9)	6.53 (165.9)	8 X 5.375 (203.2 X 136.5)	615@10 (279.0@16.1)	T6204166508
18X8.50-8	4	22 (152)	17.87 (453.9)	8.4 (213.4)	8 X 7 (203.2 X 177.8)	825@10 (374.2@16.1)	TR6206188508
18X9.50-8	4	24 (165)	17.44 (443.0)	9.41 (239.0)	8 X 7 (203.2 X 177.8)	935@10 (424.1@16.1)	T6204189508
20X10.00-10	4	22 (152)	19.6 (497.8)	9.45 (240.0)	10 X 8 (254.0 X 203.2)	1,170@10 (530.7@16.1)	T150420100010
21X7.00-12	16	50 (345)	21.38 (543.1)	7.01 (178.1)	12 X 5.5 (304.8 X 139.7)	1,390@10 (630.5@16.1)	*T125162170012
24X8.00-14	20	50 (345)	24.21 (614.9)	7.91 (200.9)	14 X 6 (355.6 X 152.4)	1,870@10 (848.2@16.1)	*T152202480014
25X7.00-18	8	54 (372)	25.43 (645.9)	6.97 (177.0)	18 X 6 (457.2 X 152.4)	1,610@10 (730.3@16.1)	*T125082570018
26X9.00-14.5	16	50 (345)	26.57 (674.9)	8.94 (227.1)	14.5 X 6 (368.3 X 152.4)	2,400@10 (1,088.6@16.1)	*T1252426900145
27X8.00-18	8	50 (345)	27.05 (687.1)	7.87 (199.9)	18 X 6 (457.2 X 152.4)	2,090@10 (948.0@16.1)	*T141082780018

*TIRE USED IN ROTARY CUTTER APPLICATION.



SEMI PNEUMATIC FLEX RIB

SPECIALTY

SEMI PNEUMATIC FLEX RIB is a semi-pneumatic tire with a ribbed tread and robust construction that delivers excellent traction and ride comfort. It's a good all-around tire for smaller equipment used in residential turf care, plus it's maintenance-free (no air required).



Tire Size	Ply	Rated Pressure	Overall Diameter	Section Width	Rim Size	Load Capacity	Part Number
		PSI (KPA)	IN (MM)	IN (MM)	IN (MM)	LBS@MPH (KG@KM/H)	
11X4.00-5	N/A	N/A	10.9 (276.9)	4.2 (106.7)	5 X 3.25 (127.0 X 82.6)	325@10 (147.4@16.1)	483855
13X6.50-6	N/A	N/A	12.7 (322.6)	5.8 (147.3)	6 X 4.5 (152.4 X 114.3)	440@10 (199.6@16.1)	483866
15X6.00-6	N/A	N/A	14.2 (360.7)	5.9 (149.9)	6 X 4.5 (152.4 X 114.3)	570@10 (258.5@16.1)	TSP156006
8X2.50-4	N/A	N/A	8 (203.2)	2.5 (63.5)	4 X 2.25 (101.6 X 57.2)	125@5 (56.7@8.0)	4124192

Semi-pneumatic tires provide a maintenance-free solution. They use a solid rubber core with a hollow air pocket running through the center of the tire; there are no tubes or valve stems. In addition to being cost-effective, these tires provide a smooth ride. Plus, OTR's tires are constructed with tight tolerancing to ensure a "lock-fit" with the wheel.



SAWTOOTH

SPECIALTY

SAWTOOTH features a tread pattern that improves traction whether operating in front- or rear-wheel drive. It's a good solution for residential use and for vehicles operating inside or outside.



Tire Size	Ply	Rated Pressure	Overall Diameter	Section Width	Rim Size	Load Capacity	Part Number
		PSI (KPA)	IN (MM)	IN (MM)	IN (MM)	LBS@MPH (KG@KM/H)	
4.10/3.50-4	4	50 (345)	10.83 (275.1)	3.9 (99.1)	4 X 3.25 (101.6 X 82.6)	350@10 (158.8@16.1)	T60644103504
4.10/3.50-6	4	50 (345)	12.8 (325.1)	3.9 (99.1)	6 X 3.25 (152.4 X 82.6)	445@10 (201.8@16.1)	T60644103506

350 MAG

GOLF-PERSONAL TRANSIT

350 MAG is an industry-leading all-around tire, ideal for turf, ATV, or utility vehicle applications. Its open, non-directional tread pattern and distinctive diamond-shaped shoulder lugs optimize handling and grip, providing exceptional performance. It is capable of handling heavier loads, while providing a comfortable ride, making this a preferred premium tire.



Tire Size	Ply	Rated Pressure	Overall Diameter	Section Width	Rim Size	Load Capacity	Part Number
		PSI (KPA)	IN (MM)	IN (MM)	IN (MM)	LBS@MPH (KG@KM/H)	
22X11.00-10	4	22 (152)	21.89 (556.0)	10.83 (275.1)	10 X 8 (254.0 X 203.2)	1,480@10 (671.3@16.1)	T24350422110010*
23X10.50-12	4	22 (152)	22.91 (582.0)	10.31 (261.9)	12 X 8.5 (304.8 X 215.9)	1,390@10 (630.5@16.1)	T24350423105012*
23X10.50-14	6	36 (248)	23.19 (589.0)	9.72 (246.9)	14 X 8.5 (355.6 X 215.9)	1,870@10 (848.2@16.1)	T24350423105014*

ASSEMBLY INFORMATION

Size	Wheel Type	Wheel Color	Wheel Part Number	Tire Part Number	Assembly Part Number
22X11.00-10	STEEL	BLACK	10070515	T24350422110010*	OTR4
22X11.00-10	ALUMINUM	BLACK	1007009	T24350422110010*	OTR13
23X10.50-12	ALUMINUM	SILVER	1207026CH	T24350423105012*	OTR5
23X10.50-12	ALUMINUM	BLACK	1207026BK	T24350423105012*	OTR6
23X10.50-14	ALUMINUM	BLACK	1407011	T24350423105014*	OTR3

*DOT APPROVED

350 MAG is an industry-recognized tire used by leading OEMs. It's a premium tire in terms of durability, ride comfort, long life, and load-bearing capacity.

“ I have had my Kioti Mechron since 2015. I use it every day to do all my chores on my property. The OTR 350 MAG has been just terrific, in all conditions—2 wheel, 4 wheel, diff lock—I've done it all. They have worn well with plenty of tread left and have never had any kind of issues. ”

– Matt Ivey, Cowlitz River Rigging-Kioti Tractor





FAIRWAY MASTER

GOLF-PERSONAL TRANSIT

FAIRWAY MASTER combines a unique tread pattern and rugged construction for a smooth ride with durability — ideal for golf and utility vehicles, whether driving on turf or asphalt. It features a gently squared shoulder that enhances grip on slopes with no damage to grass.



Tire Size	Ply	Rated Pressure	Overall Diameter	Section Width	Rim Size	Load Capacity	Part Number
		PSI (KPA)	IN (MM)	IN (MM)	IN (MM)	LBS@MPH (KG@KM/H)	
205/40-14	4	30 (207)	20.87 (530.1)	7.95 (201.9)	14 X 7 (355.6 X 177.8)	680@10 (308.4@16.1)	T825042054014*
205/50-10	4	30 (207)	18.44 (468.4)	7.83 (198.9)	10 X 6 (254.0 X 152.4)	675@10 (306.2@16.1)	T117042055010*
225/35-12	4	30 (207)	18.62 (472.9)	8.07 (205.0)	12 X 7 (304.8 X 177.8)	750@10 (340.2@16.1)	T117042253512*

ASSEMBLY INFORMATION

Size	Wheel Type	Wheel Color	Wheel Part Number	Tire Part Number	Assembly Part Number
205/50-10	ALUMINUM	BLACK	1007009	T117042055010*	OTR1
205/50-10	STEEL	BLACK	1070515	T117042055010*	OTR2
225/35-12	ALUMINUM	SILVER	1207026CH	T117042253512*	OTR11
225/35-12	ALUMINUM	BLACK	1207026BK	T117042253512*	OTR12

*DOT APPROVED



The FAIRWAY MASTER is one of the best riding tires we have used. Specifically designed for today's cart market, it has low vibration, low noise, and wears as well or better than any tire on the market. From tire to tire, the FAIRWAY MASTER is consistent with all these traits.

– Gadsden Golf Carts



PROWLER

GOLF-PERSONAL TRANSIT

PROWLER is OTR's premium turf-friendly tire. Its unique siped lugs with a continuous flat center-tread element provide excellent traction on wet turf, while reducing wear on asphalt. (It's popular for UTV and worksite applications as well.)



Tire Size	Ply	Rated Pressure	Overall Diameter	Section Width	Rim Size	Load Capacity	Part Number
		PSI (KPA)	IN (MM)	IN (MM)	IN (MM)	LBS@MPH (KG@KM/H)	
23X10.50-12	4	20 (138)	22.72 (577.1)	10.28 (261.1)	12 X 8.5 (304.8 X 215.9)	1,320@10 (598.7@16.1)	T1550423105012
23X10.50-14	4	24 (165)	22.87 (580.9)	9.92 (252.0)	14 X 8 (355.6 X 203.2)	1,480@10 (671.3@16.1)	T1550423105014
25X10.00-12	6	32 (221)	24.96 (634.0)	9.88 (251.0)	12 X 8.5 (304.8 X 215.9)	965@65 (437.7@104.6)	T1550625100012H

ASSEMBLY INFORMATION

Size	Wheel Type	Wheel Color	Wheel Part Number	Tire Part Number	Assembly Part Number
23X10.50-12	ALUMINUM	SILVER	1207026BK	T1550423105012	OTR21
23X10.50-12	ALUMINUM	BLACK	1207026CH	T1550423105012	OTR22
23X10.50-14	ALUMINUM	BLACK	1407011	T1550423104014*	OTR23
25X10.00-12	N/A	N/A	N/A	T1550625100012H	N/A

*DOT APPROVED

PROWLER is our most popular tire for golf carts, featuring a unique OTR tread design that sets it apart from off-the-shelf replacements.





TEE MASTER

GOLF-PERSONAL TRANSIT

TEE MASTER is a radial golf tire designed for low rolling resistance, which in turn extends battery life. Its flat profile ensures excellent traction and stability with less noise on hard surfaces—an ideal solution for golf carts used in residential areas.



Tire Size	Ply	Rated Pressure	Overall Diameter	Section Width	Rim Size	Load Capacity	Part Number
		PSI (KPA)	IN (MM)	IN (MM)	IN (MM)	LBS@MPH (KG@KM/H)	
205/40R14	4	30 (207)	20.8 (528.3)	7.81 (198.4)	14 X 7 (355.6 X 177.8)	880@10 (399.2@16.1)	T1560420540R14*
205/65R10	4	22 (152)	20.8 (528.3)	7.91 (200.9)	10 X 6 (254.0 X 152.4)	970@10 (440.0@16.1)	T1560420565R10*
215/35R12	4	24 (165)	18.15 (461.0)	7.52 (191.0)	12 X 7 (304.8 X 177.8)	810@10 (367.4@16.1)	T1560421535R12*
18X8.50-8	4	22 (152)	17.72 (450.1)	8.67 (220.2)	8 X 7 (203.2 X 177.8)	825@10 (374.2@16.1)	T1560418850R8*

ASSEMBLY INFORMATION

Size	Wheel Type	Wheel Color	Wheel Part Number	Tire Part Number	Assembly Part Number
205/40R14	ALUMINUM	BLACK	1407011	T1560420540R14*	OTR19
205/65R10	ALUMINUM	BLACK	1007009	T1560420565R10*	OTR15
205/65R10	ALUMINUM	SILVER	1007009CH	T1560420565R10*	OTR16
215/35R12	ALUMINUM	BLACK	1207026BK	T1560421535R12*	OTR17
215/35R12	ALUMINUM	SILVER	1207026CH	T1560421535R12*	OTR18
18X8.50-8	STEEL	WHITE	219823101	T1560418850R8*	OTR20

*DOT APPROVED



The TEE MASTER radial has the absolute smoothest ride of any tire I've seen introduced to the golf market in the last ten years. The key, I believe, to its success was extended testing and R&D in its unique build structure. I've yet to have one complaint from a customer about noise, vibration, or unusual wear characteristics. If there is any tire I would endorse and put me and family on board with, it would be the TEE MASTER.

– Eric Huth – Sales Manager, Augusta Golf Cars - AGC



GC

GOLF-PERSONAL TRANSIT

GC is a non-directional tire with a wide footprint, reinforced sidewall, and tread pattern for stability and durability. It's competitively priced, delivering more value.



Tire Size	Ply	Rated Pressure	Overall Diameter	Section Width	Rim Size	Load Capacity	Part Number
		PSI (KPA)	IN (MM)	IN (MM)	IN (MM)	LBS@MPH (KG@KM/H)	
18X8.50-8	4	22 (152)	17.72 (450.1)	8.39 (213.1)	8 X 7 (203.2 X 177.8)	825@10MPH (374.2@16.1)	T5094188508*

ASSEMBLY INFORMATION

Size	Wheel Type	Wheel Color	Wheel Part Number	Tire Part Number	Assembly Part Number
18X8.50-8	STEEL	WHITE	219823101	T5094188508*	501240-C

*DOT APPROVED



Tubes



TRANS AMERICAN RUBBER



OTR's TRANS AMERICAN RUBBER tubes feature 100% butyl rubber for a premium tube solution. Tubes extend tire life, prevent air leakage, and add weight for improved traction. Butyl provides distinct advantages for turf equipment:

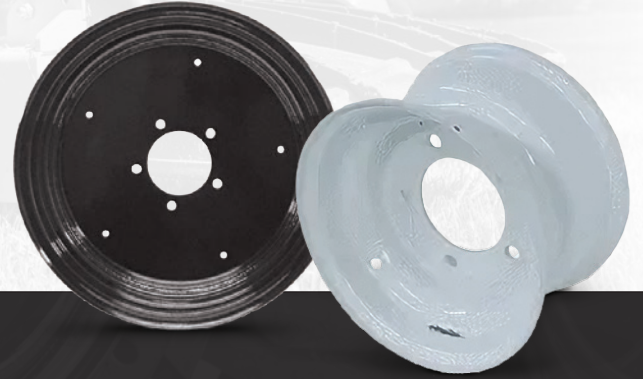
- Improved shock absorption and ride comfort.
- Excellent weatherability; resistant to heat, moisture, and chemical attack.
- Durability; resistant to flexing, abrasion, and tearing.

Tube Size	Valve	Type	Part Number
2.80/2.50-4	TR-87	BIAS	9B01NB
4.10/3.50-4	TR-13	BIAS	9B02NB
4.10/3.50-4	TR-87	BIAS	9B03NB
11X4.00/4.50/6.00-5	TR-87	BIAS	9B04NB
4.10/3.50-5	TR-13	BIAS	9B05NB
4.10/3.50-5	TR-87	BIAS	9B06NB
4.10/3.50-6	TR-13	BIAS	9B07NB
4.10/3.50-6	TR-87	BIAS	9B09NB
13X4.50/5.00/5.30-6	TR-13	BIAS	9B10NB
13X5.00-6	TR-87	BIAS	9B12NB
15X6.00-6	TR-13	BIAS	9B15NB
3.25/3.50-8	TR-13	BIAS	9B19NB
18X7-8	TR-87A	BIAS	9B32NB
5.00/5.70R-8	TR-JS2	RADIAL	9R20NB
4.80R-8	TR-87A	RADIAL	9R22NB

Lawn, Garden & Golf **Tubes**

Tube Size	For Tire Type	Valve	Part Number
<i>TUBES CONTINUED</i>			
5.00/5.70R-8	TR-13	RADIAL	9R24NB
5.70R-8	TR-87A	RADIAL	9R25NB
16X6.50/7.50R-8	TR-13	RADIAL	9R27NB
18X8.50/9.50R-8	TR-13	RADIAL	9R30NB
21X12.00/22X11.00R-8	TR-6	RADIAL	9R33NB
25X12.00R-9	TR-6	RADIAL	9R36NB
20.5X8R-10	TR-13	RADIAL	9R39NB
23X8.50/9.50R-12	TR-14	RADIAL	9R42NB
26X12.00R-12	TR-15	RADIAL	9R44NB
26X12.00R-12	TR-16	RADIAL	9R45NB
27X9.50/10.50R-12	TR-17	RADIAL	9R48NB
22X8-10	TR-6	RADIAL	9R60NB

Wheels



ROTARY CUTTER WHEELS

ROTARY CUTTER wheels are available for select RIB tires. These wheels are designed to withstand shock and vibration, with tight tolerancing to ensure durability and performance. OTR's wheels are protected from corrosion and exposure to extreme weather. Sizes range from 12 to 18 inches, in one- and two-piece configurations.



Wheel Size	Fits Tire Size	Diameter	Depth	Bolt Pattern	Pilot Hole	Nut Angle	Color	Pieces	Part Number
		IN (MM)	IN (MM)	IN (MM)	IN (MM)				
12X5	21X7.00-12	12 (304.8)	5 (127.0)	5 ON 5.5 (5 ON 139.7)	4 (101.6)	FLAT	BLACK	1	W125002
12X5	21X7.00-12	12 (304.8)	5 (127.0)	4 ON 5 (4 ON 127.0)	3.65 (92.7)	90°	JD YELLOW	1	1205002572
12X5.5	21X7.00-12	12 (304.8)	5.5 (139.7)	4 ON 5 (4 ON 127.0)	3.65 (92.7)	90°	BLACK	2	W1255001
12X5.5	21X7.00-12	12 (304.8)	5.5 (139.7)	4 ON 5 (4 ON 127.0)	3.6 (91.4)	90°	JD YELLOW	2	W1255004
14X6.00	24X8.00-14	14 (355.6)	6 (152.4)	4 ON 5 (4 ON 127.0)	3.65 (92.7)	90°	BLACK	2	146001009
14X6.00	24X8.00-14	14 (355.6)	6 (152.4)	5 ON 5.5 (5 ON 139.7)	4 (101.6)	90°	BLACK	2	W146002
14.5X6.00	26X9.00-14.5	14.5 (368.3)	6 (152.4)	5 ON 5.5 (5 ON 139.7)	4 (101.6)	90°	BLACK	2	W1456001
18X6.00	25X7.00-18 27X8.00-18	18 (457.2)	6 (152.4)	5 ON 5.5 (5 ON 139.7)	4 (101.6)	FLAT	BLACK	1	W186004

UNIVERSAL FIT FRONT WHEELS

UNIVERSAL FIT FRONT wheels are available in 4-, 5-, and 6-inch diameters, which makes them ideal for the most popular sizes of lawn, garden, and turf tires. Available with steel or aluminum construction; color options include white or black. All OTR wheels are engineered with tight tolerances to ensure fitment, stability, and durability.



Wheel Size	Fits Tire Size	Diameter	Depth	Hub Length	Center ID	Bearing Type	Color	Part Number
		IN (MM)	IN (MM)	IN (MM)	IN (MM)			
4X2.25	4.10/3.50-4	4 (101.6)	2.25 (57.2)	3.5 (88.9)	16.0 (406.4)	CAGE	WHITE	W4225006
5X3	11X4.00-5	5 (127.0)	3 (76.2)	4 (101.6)	16.0 (406.4)	SEALED	WHITE	W53025
5X3	11X4.00-5	5 (127.0)	3 (76.2)	4.1 (104.1)	13.5 (342.9)	SEALED	WHITE	W53012
6X3.25	13X5.00-6	6 (3.25)	3.25 (82.6)	5.6 (142.2)	13.5 (342.9)	SEALED	WHITE	W6325018
6X3.25	13X5.00-6	6 (3.25)	3.25 (82.6)	5.8 (147.3)	13.5/18.8 (342.9/477.5)	TAPER	WHITE	W6325015
6X4.5	13X6.50-6 15X6.00-6	6 (3.25)	4.5 (152.4)	7.3 (185.4)	13.5/18.8 (342.9/477.5)	TAPER	BLACK	W645014
6X4.5	13X6.50-6 15X6.00-6	6 (3.25)	4.5 (152.4)	7.3 (185.4)	13.5/18.8 (342.9/477.5)	TAPER	WHITE	W645007
6X4.5	13X6.50-6 15X6.00-6	6 (3.25)	4.5 (152.4)	6.97 (177.0)	13.5/18.8 (342.9/477.5)	TAPER	BLACK	W645022

STYLED OTR ALUMINUM WHEELS

Styled aluminum wheels are available for select golf and personal transit vehicles.





UNIVERSAL FIT REAR WHEELS

UNIVERSAL FIT REAR wheels range from 8 to 12 inches in diameter, covering the most popular lawn, garden, and turf tires and applications. Available with steel or aluminum construction in almond, white, or silver. All OTR wheels are engineered with tight tolerances to ensure fitment, stability, and durability.



Wheel Size	Fits Tire Size	Diameter	Depth	Bolt Pattern	Offset	Color	Part Number
		IN (MM)	IN (MM)	IN (MM)	IN (MM)		
8X3.75	4.80X8	8 (203.2)	3.75 (95.3)	4 ON 4 (4 ON 101.6)	0	WHITE	W8375006
8X3.75	4.80-8	8 (203.2)	3.75 (95.3)	5 ON 4.5 (5 ON 114.3)	0	WHITE	W8375009
8X5.375	16X6.50-8	8 (203.2)	5.375 (136.5)	4 ON 4 (4 ON 101.6)	0	WHITE	W85375001
8X5.375	16X6.50-8	8 (203.2)	5.375 (136.5)	5 ON 4.5 (5 ON 114.3)	0	WHITE	W85375007
8X6.188	16X7.50-8	8 (203.2)	6.188 (157.2)	4 ON 4 (4 ON 101.6)	-1.3 (-33.0)	WHITE	W86188006
8X6.93	18X8.50-8	8 (203.2)	6.93 (176.0)	4 ON 4 (4 ON 101.6)	-0.89 (-22.6)	WHITE	W8693003
8X7	18X8.50-8	8 (203.2)	7 (177.8)	4 ON 4 (4 ON 101.6)	0.08 (2.0)	BLACK	W87007
8X7	18X8.50-8	8 (203.2)	7 (177.8)	4 ON 4 (4 ON 101.6)	0.08 (2.0)	WHITE	W87008
8X7	18X8.50-8	8 (203.2)	7 (177.8)	4 ON 4 (4 ON 101.6)	0.08 (2.0)	ALMOND	W87012
8X7	18X8.50-8	8 (203.2)	7 (177.8)	4 ON 4 (4 ON 101.6)	0	WHITE	W87011
8X7	18X8.50-8	8 (203.2)	7 (177.8)	5 ON 4.5 (5 ON 114.3)	-0.08 (-2.0)	WHITE	W87010
9X10	25X12.00-9	9 (228.6)	10 (254.0)	5 ON 4.5 (5 ON 114.3)	0.5 (12.7)	WHITE	W910001
10X6	20X8.00-10	10 (254.0)	6 (152.4)	4 ON 4 (4 ON 101.6)	0	WHITE	W106011
10X6	20X8.00-10	10 (254.0)	6 (152.4)	5 ON 4.5 (5 ON 114.3)	-0.31 (-7.9)	WHITE	W106006
10X7	18X8.50-10	10 (254.0)	7 (177.8)	4 ON 4 (4 ON 101.6)	-0.5 (-12.7)	WHITE	W10705
10X7	18X8.50-10	10 (254.0)	7 (177.8)	5 ON 4.5 (5 ON 114.3)	-1.38 (-35.1)	WHITE	W10720
10X8.5	20X11/12.00-10	10 (254.0)	8.5 (215.9)	4 ON 4 (4 ON 101.6)	-1.23 (-31.2)	WHITE	W1085006
12X7	23X8.50-12	12 (304.8)	7 (177.8)	4 ON 4 (4 ON 101.6)	-0.75 (-19.1)	WHITE	W127007
12X7	23X8.50-12	12 (304.8)	7 (177.8)	5 ON 4.5 (5 ON 114.3)	0	WHITE	W127025

Lawn, Garden & Golf **Wheels**

Wheel Size	Fits Tire Size	Diameter	Depth	Bolt Pattern	Offset	Color	Part Number
		IN (MM)	IN (MM)	IN (MM)	IN (MM)		
<i>UNIVERSAL FIT REAR WHEELS CONTINUED</i>							
12X8	25X10.00-12	12 (304.8)	8 (203.2)	5 ON 4.5 (5 ON 114.3)	0	ALUMINUM	W128004
12X8.5	23X10.50-12	12 (304.8)	8.5 (215.9)	4 ON 4 (4 ON 101.6)	-1 (-25.4)	WHITE	W1285046
12X8.5	23X10.50-12	12 (304.8)	8.5 (215.9)	5 ON 4.5 (5 ON 114.3)	0.81 (20.6)	WHITE	W1285034
12X10.5	26X12.00-12	12 (304.8)	10.5 (266.7)	4 ON 4 (4 ON 101.6)	-1.125 (-28.6)	WHITE	W12105039
12X10.5	26X12.00-12	12 (304.8)	10.5 (266.7)	5 ON 4.5 (5 ON 114.3)	0	WHITE	W12105013
12X10.5	26X12.00-12	12 (304.8)	10.5 (266.7)	6 ON 6 (6 ON 152.4)	0	WHITE	W12105033



NDX™ AIRLESS TIRE

OTR's game-changing, patent-pending tire & wheel LASTS OVER 2X LONGER than other airless options.

NDX lasts up to 2x longer than other airless tire options, even when carrying heavy loads and after sustaining damage. It just keeps rolling, no matter what, ensuring more value and a better ROI.

KEY FEATURES:

- No flat tires = NO downtime or loss of productivity.
- Long-lasting and ultra-durable, ideal for worksites.
- Exceptional traction, grip and handling on rough terrain.
- Comfortable ride – same or better than pneumatics.
- Wide contact patch enhances stability and braking.



*NDX technology available with GRASS MASTER (p.6-8) and ZERO-T II (p.14).

NDX Commercial Turf



- Supports loaded grass catchers with no tire impact.
- Supports loads up to 880 lbs at 10-20 PSI.

NDX Powersports



- On OTR's figure-eight test track, a **1-1/2" hole was drilled into the sidewall** of the NDX tire. It was then placed under a 1,000-lb. load and driven for 1,000 miles with no degradation in performance.

An ECO-Friendly Mobility Solution

NDX tires reduce fuel consumption by up to 10%, making them an eco-friendly solution. Plus, tires lasts longer, resulting in less waste.



Air Ready

Though designed to operate completely airless and deliver an extremely smooth ride, air can be added to NDX tires for enhanced ride comfort.

NDX Warranty

The NDX warranty term extends to three (3) years from date of purchase. Coverage is terminated once tread depth reaches 3 mm (or 4/32"), as will be indicated by tread wear indicator (TWI) tabs located between the treads and on the sidewalls.



See warranty document for full details.

1 flat tire every other week

=

26 flat tires annually

1 flat tire

=

2 hours of downtime

2 hours of downtime

=

52 hours of lost productivity annually

\$300
cost per incident
(lost productivity + labor)

=

\$7,800
in opportunity costs

Zero-Turn, Riding & Stand-On Mowers:

4 vehicles in the average fleet = **\$31,200** lost annually

Utility & Rough Terrain Vehicles:

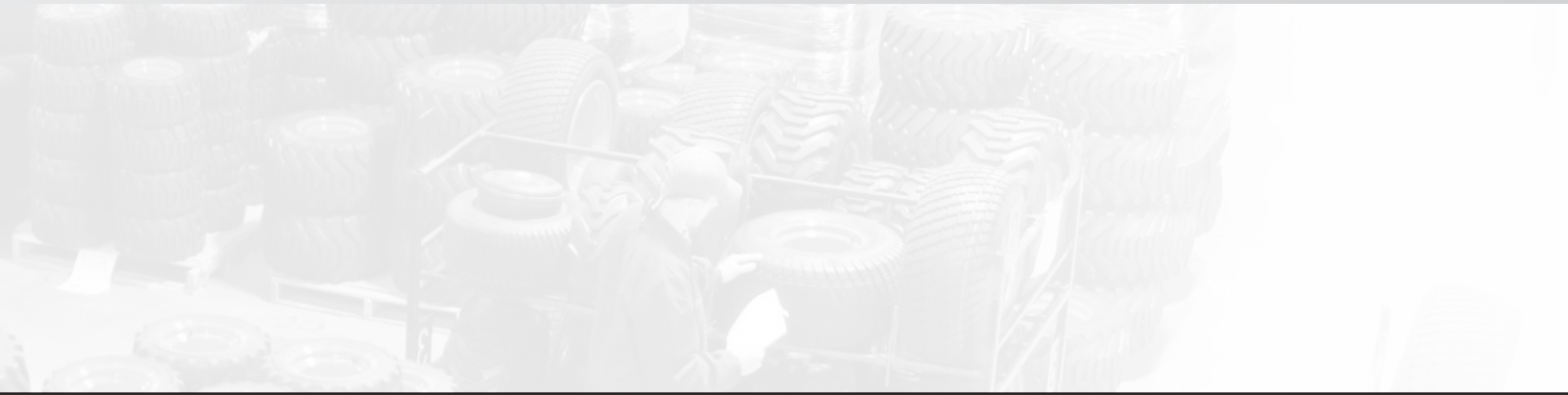
10 vehicles in the average fleet = **\$78,000** lost annually

Services



MOUNTING & SEQUENCING

In addition to tires and wheels, OTR provides tire and wheel mounting sequencing, just-in-time delivery, and warehousing for OEM customers. Facilities are located around the world, close to OEM customers' locations. Key processes are automated, with automatic tire inflation systems that are repeatable and accurate.



TyrLyner®

TyrLyner® is a proprietary rubber urethane securely applied to the inside of a tire's casing to extend life and enhance safe operation. Its "self-healing" technology ensures the tire is sealed when punctured or cut by objects up to ¼-inch diameter. The coating is applied at an OTR facility for OEMs and distributors who support fleets and owner-operators engaged in construction work, where downtime is NOT an option.

SUPPLY CHAIN PROTECTION ISO-9001

The Customs-Trade Partnership Against Terrorism (C-TPAT) was created by U.S. Customs and Border Protection (CBP) as a voluntary program for companies that are involved in the global supply chain.

As a C-TPAT partner, we do our part to alleviate supply chain disruption and reduce border delays.



FREQUENTLY ASKED QUESTIONS ABOUT C-TPAT CERTIFICATION:

- **Why does this matter to me?**
Expedited port entry, more accurate delivery schedules, and protecting our borders. Being C-TPAT certified allows our shipping containers to bypass the security-related delays at the ports of entry. Our certification ensures that our supply chain is secure throughout; from the manufacturing facility, through the ports, and on to the final destination.
- **How much time can be saved by being C-TPAT certified?**
There are many factors involved, but the government estimates that non-certified shipments are 3.5 times more likely to be delayed by security inspection. Also, should a C-TPAT certified shipment be randomly chosen for inspection, it is given priority status and is moved to the front of the existing queue for inspection.
- **Is C-TPAT certified easy?**
Actually, it is a very comprehensive process that can take years to complete. There are a series of site visits throughout the supply chain, reference checks, paperwork, fees, and even a personal interview. C-TPAT certified companies must permanently adhere to strict policies in order to maintain certification.



ISO CERTIFICATION

The International Organization for Standardization (ISO) helps to set global standards of excellence for both quality and management systems. Certified companies must undergo rigorous inspections and evaluations to ensure that they adhere to the highest standards.

ISO BENEFITS:

- Consistent product quality.
- Standardized production and record keeping.
- Product dependability.
- Enhanced customer satisfaction.

CONTACT INFORMATION

OEM Inquiries: Contact your local OTR salesperson or email sales@otrwheel.com.

Aftermarket Inquiries: Contact your local OTR salesperson or call 800-833-6309 (east of the Mississippi River) or 888-455-4910 (west of the Mississippi).

Trans American Rubber Tubes, Flaps, or Accessories: Call 800-922-8823 for additional information.

WARRANTY INFORMATION

OTR provides limited warranty coverage for tires, wheels, tracks, and other items in the event of defects in workmanship. You may request a copy of our policy by emailing us at sales@otrwheel.com.

Note that OTR has designated select dealers and distributors to assist with warranty repairs. Contact OTR for more information.

CATALOG DISCLAIMER

Product specifications and information were correct as of the date of this catalog release, but are subject to change without notice or obligation. Every effort has been made to ensure the accuracy of this catalog. Consult with your salesperson if you wish to verify data is correct.

ISO 9001: 2015 CERTIFICATION

OTR facilities are ISO 9001: 2015 registered (except for new locations where certifications are in process). ISO ensures consistent product quality, standardization, documentation, and compliance with OEM requirements.

REACH COMPLIANCE

OTR's custom tires for OEMs can be designed with REACH compliance. Consult with your salesperson as needed.

A series of horizontal dotted lines spanning the width of the page, providing a template for writing or drawing.

A series of horizontal dotted lines for writing notes.



OTR's Commitment:

SOLUTIONS

OTR doesn't just sell tires and wheels, we diagnose problems and provide solutions.

VALUE

OTR optimizes ROI with high performance & value-added services to deliver results.

INNOVATION

OTR has a passion for innovating solutions that exceed customer expectations.

PARTNERSHIP

We're not just a vendor, we're a long-term partner who will support your business.

+1.800.833.6309

www.otrwheel.com



OTR is the operating unit of OTR International, Inc., comprising businesses located in the U.S., Canada, Europe, China, Thailand, and Sri Lanka. OTR is a partner company of Owner Resource Group (ORG), LLC.

© 2024 OTR International, Inc. All Rights Reserved. | C-NA-V052424