



Agriculture

Tires | Tubes | Wheels | Assemblies





OTR Engineered Solutions (OTR)

is your global partner for high-quality off-the-road tires, wheels, assemblies, and accessories. We are proud to supply end-user customers, dealers, and original equipment manufacturers with engineered solutions to meet and exceed common – and uncommon – challenges in such core markets as Agriculture, Construction, Forestry, Industrial, Lawn & Garden, Material Handling, Mining, Powersports, and Specialty Vehicles. But our success is much more than the products we offer. We're a multinational enterprise with more than 1,400 employees throughout 32 facilities worldwide dedicated to supporting you with a full range of high-level services to help you Roll More™.

Agriculture

Our Agricultural tires and wheels are the result of many years of experience, innovation, and a hands-on approach to help ensure they get the job done the way you want. Whatever the equipment – light- to heavy-duty tractors, harvesting vehicles, sprayers, trailers, implements, pivot irrigation, and more – we have solutions to effectively traverse mud, stubble, turf, rocky soils, and anything else a farm can throw at them.



Table of Contents

Tires

TR-34	6
XT-41.....	6
LAWN TRAC	7
TRACTION MASTER	8
FIELD MASTER	9
CROP MASTER	9
CROP TRACX	10
I-1 RIB IMPLEMENT	10
BUSHMASTER RIB.....	11
LITEFOOT PRO.....	11
LITEFOOT G1/R1	12
BIG FOOT.....	12
RAINMAX.....	13
RAINMAX H ₂ O.....	13
RAINMAX N/D	14
TRAILER TIRES	14
PLANTING/SEEDING TIRES.....	15

Tubes

BUTYL RUBBER TUBES.....	16-18
NATURAL RUBBER TUBES.....	19

Wheels

STANDARD IMPLEMENT WHEELS	20-21
PIVOT WHEELS.....	22

Assemblies

CLOSING WHEEL ASSEMBLIES	23
PRESS WHEEL ASSEMBLIES.....	24
GAUGE WHEEL ASSEMBLIES	25

Custom Engineering	26
---------------------------------	----

Accessories	27
--------------------------	----

Services

Mounting & Sequencing.....	28
TyrLyner®.....	29

Information & Disclaimers	30-31
--	-------

Tires

Quick Reference Guide



TR-34

6



XT-41

6



LAWN TRAC

7



TRACTION
MASTER

8



FIELD MASTER

9



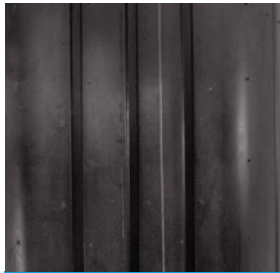
CROP MASTER

9



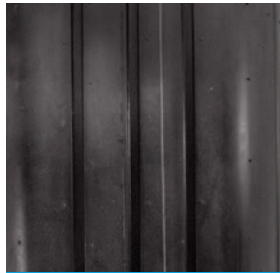
CROP TRACX

10



I-1 RIB
IMPLEMENT

10



BUSHMASTER
RIB

11



LITEFOOT PRO

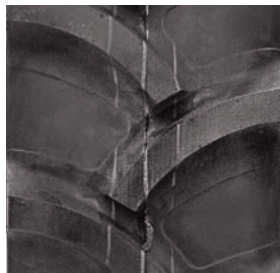
11



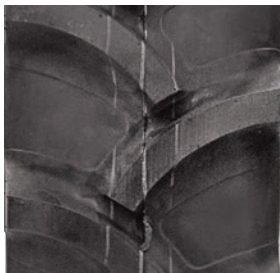
LITEFOOT G1/R1 12



BIG FOOT 12



RAINMAX 13



RAINMAX H₂O 13



RAINMAX N/D 14



TRAILER TIRES 14



PLANTING/
SEEDING TIRES 15



TR-34

The TR-34 turf tire is designed for use on farm tractors and ride-on mowers. It features a tight, non-directional tread pattern to optimize traction, tread wear, and ride comfort, while also optimizing performance in a wide range of conditions.



Tire Size	Ply	Rated Pressure	Overall Diameter	Section Width	Rim Size	Load Capacity	Part Number
		PSI (KPA)	IN (MM)	IN (MM)	IN (MM)	LBS@MPH (KG@KM/H)	
16X7.50-8	6	38 (262)	15.9 (403.9)	7.1 (180.3)	8 X 5.375 (203.2 X 136.5)	785@20 (356.1@32.2)	T25006167508
18X8.50-10	6	32 (221)	17.9 (454.7)	8.0 (203.2)	10 X 7 (254.0 X 177.8)	935@20 (424.1@32.2)	T250061885010
24X12.00-12	6	32 (221)	24.1 (612.1)	12.0 (304.8)	12 X 10.5 (304.8 X 266.7)	2,040@20 (925.3@32.2)	T2500624120012
26X12.00-12	6	30 (207)	25.8 (655.3)	12.1 (307.3)	12 X 10.5 (304.8 X 266.7)	2,040@20 (925.3@32.2)	T2500626120012

XT-41

XT-41 is a game-changing “hybrid” crossover tire blending R4 and R1 tread patterns for maximum flexibility when operating on- or off-road. Ideal for compact equipment, the tire’s high tread-to-void ratio makes it well suited for handling hard surfaces, with overlapping center tread blocks that reduce wear and improve ride comfort. It features rock ejectors in between lugs to ensure high performance when operating in wet or muddy conditions. Exceptional traction in all conditions – from soft, wet ground to hard pack – makes this tire an exceptional value for fleets and owner-operators.



Tire Size	Ply	Rated Pressure	Overall Diameter	Section Width	Rim Size	Load Capacity	Part Number
		PSI (KPA)	IN (MM)	IN (MM)	IN (MM)	LBS@MPH (KG@KM/H)	
18X8.50-10	4	22 (152)	17.92 (455.2)	7.88 (200.2)	10 X 7 (254.0 X 177.8)	780@10 (353.8@16.1)	T198041885010
18X8.50-10	8	44 (303)	17.87 (453.9)	8.11 (206.0)	10 X 7 (254.0 X 177.8)	1,230@10 (557.9@16.1)	T198081885010
23X8.50-12	6	35 (241)	22.8 (579.1)	8.35 (212.1)	12 X 7 (304.8 X 177.8)	1,470@10 (666.8@16.1)	T198062385012
26X12.00-12	4	20 (138)	26.07 (662.2)	11.84 (300.7)	12 X 10.5 (304.8 X 266.7)	1,760@10 (798.3@16.1)	T1980426120012
12-16.5	6	40 (276)	33.48 (850.4)	11.69 (296.9)	16.5 X 9.75 (419.1 X 247.7)	4,180@5 (1,896.0@8.0)	T1980612165

OTHER SIZES AND TREAD PATTERNS AVAILABLE.

LAWN TRAC

LAWN TRAC provides an open, deep lug design with a large footprint that maximizes ground contact for better grip – an excellent all-around solution for operating on muddy fields or hills. It's self-cleaning with lugs designed to eject mud and debris away from the tire, so there is no slowing down.



Tire Size	Ply	Rated Pressure	Overall Diameter	Section Width	Rim Size	Load Capacity	Part Number
		PSI (KPA)	IN (MM)	IN (MM)	IN (MM)	LBS@MPH (KG@KM/H)	
16X7.50-8	4	24 (165)	16 (406.4)	7.5 (190.5)	8 X 5.375 (203.2 X 136.5)	710@10 (322.1@16.1)	T10004167508
16X7.50-8	6	38 (262)	16 (406.4)	7.5 (190.5)	8 X 5.375 (203.2 X 136.5)	710@10 (322.1@16.1)	T10006167508
18X8.50-8	4	22 (152)	18.11 (460.0)	8.38 (212.9)	8 X 7 (203.2 X 177.8)	825@10 (374.2@16.1)	T10004188508
18X8.50-10	4	22 (152)	18.1 (459.7)	7.6 (193.0)	10 X 7 (254.0 X 177.8)	780@10 (353.8@16.1)	T100041885010
18X8.50-10	8	44 (303)	17.72 (450.1)	8.19 (208.0)	10 X 7 (254.0 X 177.8)	1,230@10 (557.9@16.1)	T100081885010
18X9.50-8	4	22 (152)	18.07 (459.0)	9.3 (236.2)	8 X 7 (203.2 X 177.8)	825@10 (374.2@16.1)	TR10004189508
23X10.50-12	4	20 (138)	22.8 (579.1)	10.5 (266.7)	12 X 8.5 (304.8 X 215.9)	1,320@10 (598.7@16.1)	T1000423105012
24X12.00-12	4	20 (138)	23.94 (608.1)	12.13 (308.1)	12 X 10.5 (304.8 X 266.7)	1,710@10 (775.6@16.1)	T1000424120012
26X10.00-12	4	22 (152)	25.85 (656.6)	10.28 (261.1)	12 X 8.5 (304.8 X 215.9)	1,710@10 (775.6@16.1)	T1000426100012
26X12.00-12	4	20 (138)	25.98 (659.9)	12.28 (311.9)	12 X 10.5 (304.8 X 266.7)	1,760@10 (798.3@16.1)	T1000426120012
26X12.00-12	4	20 (138)	26 (660.4)	12 (304.8)	12 X 10.5 (304.8 X 266.7)	1,760@10 (798.3@16.1)	T1000426120012RG*

*RIM GUARD



TRACTION MASTER

TRACTION MASTER features deep, flat, layered lugs for superior grip and handling on soft ground with extra-wide shoulders and rim guards for protection against side impact. It's cut- and puncture-resistant with a self-cleaning design.



Tire Size	Ply	Rated Pressure	Overall Diameter	Section Width	Rim Size	Load Capacity	Part Number
		PSI (KPA)	IN (MM)	IN (MM)	IN (MM)	LBS@MPH (KG@KM/H)	
7-16	6	36 (248)	29.4 (746.8)	7.1 (180.3)	16 X 5 (406.4 X 127.0)	1,100@20 (449.0@32.2)	T190670016
7.2-16	8	48 (331)	29.44 (747.8)	7.1 (180.3)	16 X 6 (406.4 X 152.4)	910@20 (412.8@32.2)	T17087216
8-16	6	28 (193)	31.7 (805.2)	8 (203.2)	16 X 6 (406.4 X 152.4)	1,360@20 (616.9@32.2)	T170680016
8.3-16	6	34 (234)	31.17 (791.7)	8.64 (219.5)	16 X 6 (406.4 X 152.4)	1,330@20 (603.3@32.2)	T17068316
8-18	8	28 (193)	32.4 (823.0)	8 (203.2)	18 X 6 (457.2 X 152.4)	1,480@20 (671.3@32.2)	T170880018
29X12.5-15	8	40 (276)	28.95 (735.3)	12.45 (316.2)	15 X 10 (381.0 X 254.0)	1,980@10 (898.1@16.1)	T13082912515
31X15.50-15	10	45 (310)	31.03 (788.2)	14.31 (363.5)	15 X 13 (381.0 X 330.2)	3,645@10 (1,653.3@16.1)	T131031155015
31X15.50-15	8	45 (310)	31.06 (788.9)	14.33 (364.0)	15 X 13 (381.0 X 330.2)	3,645@10 (1,653.3@16.1)	T130831155015

Traction Master versus Field Master

At first glance, the tread patterns of the TRACTION MASTER and FIELD MASTER look almost identical, but there is a key distinction: lug angle. The TRACTION MASTER features a lug angle of 45 degrees, whereas the FIELD MASTER has a 23-degree lug angle. The ideal choice depends on field conditions.



TRACTION MASTER 45-Degree Tread Angle:

- + Resists side slippage on hillsides.
- + Much better traction in muddy conditions.
- Not as fuel efficient, marginal ride quality on dry, flat surfaces.



FIELD MASTER 23-Degree Tread Angle:

- + Better traction on firm, dry ground.
- + More bars in contact with ground at one time leads to better ride comfort.
- Prone to slippage in wet, hilly conditions.

FIELD MASTER

FIELD MASTER features an aggressive tread with angled lugs to enhance grip on rough terrain. Its wide stance and reinforced casing ensure stability and durability, providing a flexible solution for agriculture applications while delivering a good overall value.



Tire Size	Ply	Rated Pressure	Overall Diameter	Section Width	Rim Size	Load Capacity	Part Number
		PSI (KPA)	IN (MM)	IN (MM)	IN (MM)	LBS@MPH (KG@KM/H)	
4.80X4.00-8	4	42 (290)	17.01 (432.1)	4.33 (110.0)	8 X 3 (203.2 X 76.2)	500@5 (226.8@8.0)	T48048003
11.2-24	4	22 (152)	43.66 (1,109.0)	11.28 (286.5)	24 X 10 (609.6 X 254.0)	1,650@20 (748.4@32.2)	T600411224R1
13.6-24	4	14 (97)	46.83 (1,189.5)	13.12 (333.2)	24 X 12 (609.6 X 304.8)	2,040@20 (925.3@32.2)	T600413624R1
13.6-28	6	24 (165)	50.97 (1,294.6)	12.9 (327.7)	28 X 10 (711.2 X 254.0)	2,830@20 (1,283.7@32.2)	T600613624R1
23X10.00-12	6	40 (276)	23.01 (584.5)	9.59 (243.6)	12 X 8.5 (304.8 X 215.9)	1,985@10 (900.4@16.1)	T1040623100012
23X10.00-12	8	40 (276)	23.03 (585.0)	9.56 (242.8)	12 X 8.5 (304.8 X 215.9)	1,985@10 (900.4@16.1)	T1040823100012
26X10.00-12	6	32 (221)	25.75 (654.1)	10.54 (267.7)	12 X 8 (304.8 X 203.2)	2,090@10 (948.0@16.1)	T104062610012
26X10.00-12	8	50 (345)	25.75 (654.1)	10.54 (267.7)	12 X 8 (304.8 X 203.2)	3,020@10 (1,369.8@16.1)	T104082610012

CROP MASTER

CROP MASTER features a field-friendly R1 tread with heavy-duty construction that covers all the bases. Durable and long-lasting, it has exceptional flotation characteristics and load capacity. Its directional lug design and contact area ensure traction and handling on a variety of surfaces, wet or dry, providing for ride comfort and minimal soil compaction. This tire truly masters the mobility requirements of field work all season long.



Tire Size	Ply	Rated Pressure	Overall Diameter	Section Width	Rim Size	Load Capacity	Part Number
		PSI (KPA)	IN (MM)	IN (MM)	IN (MM)	LBS@MPH (KG@KM/H)	
9.5-16	6	30 (207)	33.54 (851.9)	9.5 (241.3)	16 X 8 (406.4 X 203.2)	1,390@20 (630.5@32.2)	T60069516R1
9.5-22	8	40 (276)	40.04 (1,017.0)	9.65 (245.1)	22 X 7 (558.8 X 177.8)	1,760@20 (798.3@32.2)	T60089522R1



CROP TRACX

CROP TRACX offers a unique G1W lug design that extends sidewall-to-sidewall. This functions like a cleat for maximum traction, especially when operating on wet soil. At the same time, its tread pattern ensures a smooth ride on hard surfaces with minimal wear thanks to heavy-duty construction and a premium compound, making this an exceptional solution, especially for compact tractors.



Tire Size	Ply	Rated Pressure	Overall Diameter	Section Width	Rim Size	Load Capacity	Part Number
		PSI (KPA)	IN (MM)	IN (MM)	IN (MM)	LBS@MPH (KG@KM/H)	
7-16	4	24 (165)	28.48 (723.4)	6.41 (162.8)	16 X 5 (406.4 X 127.0)	855@20 (387.8@32.2)	T6004716
8-16	4	18 (124)	30.13 (765.3)	7.74 (196.6)	16 X 6 (406.4 X 152.4)	1070@20 (485.3@32.2)	T6004816

I-1 RIB IMPLEMENT

I-1 RIB IMPLEMENT tires are designed for heavy-duty agricultural use with 8-ply construction and a cut- and puncture-resistant compound featuring Stubble Guard technology. This unique feature effectively protects the tire from residual stubble damage, enhancing durability while reducing costs.



Tire Size	Ply	Rated Pressure	Overall Diameter	Section Width	Rim Size	Load Capacity	Part Number
		PSI (KPA)	IN (MM)	IN (MM)	IN (MM)	LBS@MPH (KG@KM/H)	
23X10.50-14	6	36 (248)	22.95 (582.9)	10.69 (271.5)	14 X 8.5 (355.6 X 215.9)	1,870@10 (848.2@16.1)	T150623105014
6.70-15 SL	8	44 (303)	27.78 (705.6)	7.11 (180.6)	15 X 5 (381.0 X 127.0)	1,930@10 (875.4@16.1)	T2020867015
7.60-15 SL	8	44 (303)	28.7 (729.0)	7.9 (200.7)	15 X 5 (381.0 X 127.0)	1,610@5 (730.3@8.0)	T2020876015



OTR STUBBLE GUARD TECHNOLOGY

OTR's Stubble Guard technology comprises heavy-duty construction and compounds with extra layering that provides cut, chip, and puncture-resistance for vehicles operating in harm's way. This technology is especially well suited for tires used in agricultural related equipment, such as farm implements, trailers, wagons, and tractors (as front tires).

BUSHMASTER RIB

OTR's BUSHMASTER RIB tire offers excellent traction and durability, which is ideal for a wide range of turf applications, such as rotary cutters. Its circumferential ribs and broad shoulders enhance operation in wet conditions while offering a low-impact design that minimizes turf damage.



Tire Size	Ply	Rated Pressure	Overall Diameter	Section Width	Rim Size	Load Capacity	Part Number
		PSI (KPA)	IN (MM)	IN (MM)	IN (MM)	LBS@MPH (KG@KM/H)	
21X7.00-12	16	50 (345)	21.38 (543.1)	7.01 (178.1)	12 X 5.5 (304.8 X 139.7)	1,390@10 (630.5@16.1)	T125162170012
24X8.00-14	20	50 (345)	24.25 (616.0)	7.91 (200.9)	14 X 6 (355.6 X 152.4)	1,870@10 (848.2@16.1)	T125202480014
25X7.00-18	8	54 (372)	25.43 (645.9)	6.97 (177.0)	18 X 6 (457.2 X 152.4)	1,610@10 (730.3@16.1)	T125082570018
26X9.00-14.5	16	50 (345)	26.57 (674.9)	8.94 (227.1)	14.5 X 6 (368.3 X 152.4)	1,930@10 (875.4@16.1)	T1252426900145
27X8.00-18	8	50 (345)	26.93 (684.0)	7.91 (200.9)	18 X 6 (457.2 X 152.4)	1,930@10 (875.4@16.1)	T125082780018

LITEFOOT PRO

LITEFOOT PRO is a turf-friendly tire for subcompact and compact tractors. It features symmetrical tread blocks and broad shoulders that optimize ground contact and traction while operating on slopes. Sipes and deep grooves ensure self-cleaning, improving traction in wet and muddy conditions as well.

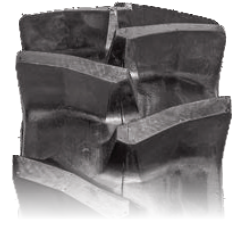


Tire Size	Ply	Rated Pressure	Overall Diameter	Section Width	Rim Size	Load Capacity	Part Number
		PSI (KPA)	IN (MM)	IN (MM)	IN (MM)	LBS@MPH (KG@KM/H)	
12-16.5	6	40 (276)	33.46 (849.9)	11.81 (300.0)	16.5 X 9.75 (419.1 X 247.7)	4,180@5 (1,896.0@8.0)	T2090612165
23X8.50-12	6	35 (241)	22.91 (581.9)	8.46 (214.9)	12 X 7 (304.8 X 177.8)	1,470@10 (666.8@16.1)	T209062385012
41X18LL.225	14	50 (345)	41.2 (1,046.5)	17.55 (445.8)	22.5 X 14 (571.5 X 355.6)	9,100@10 (4,127.7@16.1)	T209144118LL225
41X18LL.225	20	80 (552)	41.2 (1,046.5)	17.55 (445.8)	22.5 X 14 (571.5 X 355.6)	14,800@10 (6,713.2@16.1)	T209204118LL225



LITEFOOT G1/R1

The LITEFOOT G1/R1 features deep angled lugs for improved grip and handling in wet fields. It provides exceptional performance for any ag application with good overall value for the money.



Tire Size	Ply	Rated Pressure	Overall Diameter	Section Width	Rim Size	Load Capacity	Part Number
		PSI (KPA)	IN (MM)	IN (MM)	IN (MM)	LBS@MPH (KG@KM/H)	
7-16	4	24 (165)	29.213 (742.0)	7.205 (183.0)	16 X 5 (406.4 X 127.0)	855@20 (387.8@32.2)	T6004716G1
8.3-22	6	35 (241)	37.2 (944.9)	8.1 (205.7)	22 X 7 (558.8 X 177.8)	1,760@10 (798.3@16.1)	T60068322R1

BIG FOOT

BIG FOOT uses an R1 tread pattern with ultra-deep lugs and low void-to-tread ratio, delivering excellent traction – especially on wet and muddy surfaces – with a self-cleaning feature. Its construction provides cut and chip resistance for operating in fields, enhancing durability and useful operating life.



Tire Size	Ply	Rated Pressure	Overall Diameter	Section Width	Rim Size	Load Capacity	Part Number
		PSI (KPA)	IN (MM)	IN (MM)	IN (MM)	LBS@MPH (KG@KM/H)	
5-12	4	35 (241)	21.81 (554.0)	4.83 (122.7)	12 X 4 (304.8 X 101.6)	490@20 (222.3@32.2)	T6004512
6-14	4	36 (248)	26.535 (674.0)	6.575 (167.0)	14 X 5 (355.6 X 127.0)	805@25 (365.1@40.2)	T6004614
8-18	4	23 (159)	33.071 (840.0)	8.110 (206.0)	18 X 6 (457.2 X 152.4)	1,146@20 (519.8@32.2)	T6004818
8-18	6	28 (193)	32.82 (833.6)	7.82 (198.6)	18 X 6 (457.2 X 152.4)	1,140@20 (517.1@32.2)	T6006818
8.3-20	4	23 (159)	34.06 (865.1)	7.87 (199.9)	20 X 7 (508.0 X 177.8)	1,235@20 (560.2@32.2)	T60048320
8.3-20	6	34 (234)	35 (889.0)	9.49 (241.0)	20 X 7 (508.0 X 177.8)	1,235@20 (560.2@32.2)	T1535068320
11.2-24	4	18 (124)	43.11 (1,095.0)	11.01 (279.7)	24 X 9 (609.6 X 228.6)	1,650@25 (748.4@40.2)	T600411224
12.4-24	4	16 (110)	45.55 (1,157.0)	11.89 (302.0)	24 X 10 (609.6 X 254.0)	1,870@25 (848.2@40.2)	T600412424
13.6-26	6	22 (152)	49.606 (1,260.0)	13.386 (340.0)	26 X 11 (660.4 X 279.4)	2,800@25 (1,270.1@40.2)	T600413626
180/85D12	4	23 (159)	24.13 (612.9)	6.3 (160.0)	12 X 4.5 (304.8 X 114.3)	595@20 (269.9@32.2)	T60041808512

RAINMAX

RAINMAX is a popular directional R1 tire designed for irrigation equipment using center pivot style wheels. Its unique design features deep cleated lugs that are curved to prevent ruts and slipping on hills. Heavy-duty construction and reinforced sidewalls, coupled with a unique tread pattern, delivers superior traction and handling on wet and muddy ground.



Tire Size	Ply	Rated Pressure	Overall Diameter	Section Width	Rim Size	Load Capacity	Part Number
		PSI (KPA)	IN (MM)	IN (MM)	IN (MM)	LBS@MPH (KG@KM/H)	
11.2-38	6	26 (179)	58.66 (1,490.0)	11.81 (300.0)	38 X 10 (965.2 X 254.0)	2,600@25 (1,179.3@40.2)	T690611238
14.9-24	6	26 (179)	51.22 (1,301.0)	14.96 (380.0)	24 X 12 (609.6 X 304.8)	3,420@CREEP (1,551.3@CREEP)	T690614924

RAINMAX H₂O

RAINMAX H₂O is an R1 tire for irrigation equipment using center pivot style wheels, offering enhanced protection from environmental stresses that cause premature aging and failures. Its heavy-duty construction, tread pattern, and premium UV-resistant compounds ensure long life. The lug design – derived from OTR's proven RAINMAX tire – maximizes traction on wet and muddy ground with a self-cleaning feature, making this an excellent all-around mobility solution for irrigation.



Tire Size	Ply	Rated Pressure	Overall Diameter	Section Width	Rim Size	Load Capacity	Part Number
		PSI (KPA)	IN (MM)	IN (MM)	IN (MM)	LBS@MPH (KG@KM/H)	
11-22.5	10	45 (310)	42.52 (1,080.0)	11.02 (279.9)	22.5 X 8.25 (571.5 X 209.6)	5,060@10 (2,295.2@16.1)	T2151011225
11-24.5	10	45 (310)	44.45 (1,129.0)	10.83 (275.1)	24.5 X 8.25 (622.3 X 209.6)	5,060@10 (2,295.2@16.1)	T2151011245
11.2-24	6	26 (179)	43.97 (1,116.8)	11.38 (289.1)	24 X 10 (609.6 X 254.0)	3,000@10 (1,360.8@16.1)	T2150611224
11.2-38	6	26 (179)	57.51 (1,460.8)	11.49 (291.8)	38 X 10 (965.2 X 254.0)	2,540@25 (1,152.1@40.2)	T2150611238
14.9-24	6	20 (138)	50.04 (1,271.0)	14.65 (372.1)	24 X 12 (609.6 X 304.8)	3,000@25 (1,360.8@40.2)	T2150614924



RAINMAX N/D

RAINMAX N/D is designed for irrigation equipment using center pivot style wheels. Its unique design features deep cleated lugs that are curved to prevent ruts and slipping on hills. The non-directional tread pattern maximizes traction when rotating in either direction of the irrigation system.



Tire Size	Ply	Rated Pressure	Overall Diameter	Section Width	Rim Size	Load Capacity	Part Number
		PSI (KPA)	IN (MM)	IN (MM)	IN (MM)	LBS@MPH (KG@KM/H)	
11.2-24	6	26 (179)	43.54 (1,105.9)	10.94 (277.9)	24 X 10 (609.6 X 254.0)	3,000@10 (1,360.8@16.1)	T11224015
11.2-38	6	26 (179)	58.27 (1,480.1)	11.65 (295.9)	38 X 10 (965.2 X 254.0)	2,600@25 (1,179.3@40.2)	T11238011
14.9-24	6	20 (138)	49.41 (1,255.0)	14.68 (372.9)	24 X 13 (609.6 X 330.2)	3,000@25 (1,360.8@40.2)	T14924018

TRAILER TIRES

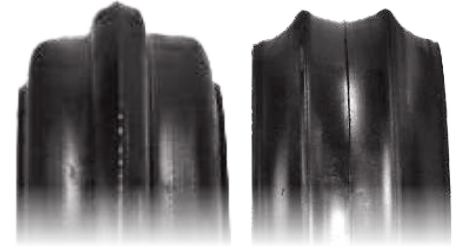
OTR offers custom tires – ST type – for agricultural trailer applications such as header transport, baler, and utility for original equipment manufacturers and fleets. Sizes range from 4.8 to 20.5 inches. These can be sold as assemblies with steel wheels.



Tire Size	Ply	Rated Pressure	Overall Diameter	Section Width	Rim Size	Load Capacity	Part Number
		PSI (KPA)	IN (MM)	IN (MM)	IN (MM)	LBS@MPH (KG@KM/H)	
4.80-8	6	90 (621)	16 (406.4)	4.7 (119.4)	8 X 3.75 (203.2 X 95.3)	745 (337.9)	T81964808
4.80-12	6	90 (621)	20.35 (516.9)	4.76 (120.9)	12 X 3.75 (304.8 X 95.3)	990 (449.1)	T811648012
5.30-12	6	90 (621)	20.35 (516.9)	4.76 (120.9)	12 X 3.75 (304.8 X 95.3)	1,050 (476.3)	T811653012
5.70-8	6	75 (517)	18.11 (460.0)	6.1 (154.9)	8 X 4.5 (203.2 X 114.3)	910 (412.8)	T819657012
16.5X6.50-8	4	45 (310)	16.26 (413.0)	6.65 (168.9)	8 X 5.375 (203.2 X 136.5)	615 (279.0)	T81141656508
18.5X8.50-8	6	50 (345)	18.89 (479.8)	8.39 (213.1)	8 X 7 (203.2 X 177.8)	940 (426.4)	T81141858508
20.5X8.0-10	10	90 (621)	20.5 (520.7)	8.07 (205.0)	10 X 6 (254.0 X 152.4)	1,535 (696.3)	T81510205810

PLANTING/SEEDING TIRES

OTR offers a multitude of semi-pneumatic and solid tires for use on planters, seeders, and grain drills. All are manufactured with cut-resistant rubber compounds for maximum durability.



Tire Size	Overall Diameter	Section Width	Part Number
	IN (MM)	IN (MM)	
1X9 V TREAD CLINCHER	9 (228.6)	1 (25.4)	2A0969
1X10 SMOOTH CROWN CLINCHER	10 (254.0)	1 (25.4)	2A1044
1X10 TAPERED	10 (254.0)	1 (25.4)	2A1145-20
1X12 SMOOTH CROWN	12 (304.8)	1 (25.4)	2A1209
1.25X13.5 WEDGE CLINCHER	13.5 (342.9)	1.25 (31.75)	2A2579
2X13 V TREAD CLINCHER	13 (330.2)	2 (50.8)	2A2374
2X13 SINGLE RIB REG BASE	13 (330.2)	2 (50.8)	2A2356
2X13 SMOOTH CROWN REG BASE	13 (330.2)	2 (50.8)	2A2312
2X13 SMOOTH CROWN CLINCHER	13 (330.2)	2 (50.8)	2A2332
2X16 SMOOTH CROWN CLINCHER	16 (406.4)	2 (50.8)	2A2606
2.5X13 CHINED	13 (330.2)	2.5 (63.5)	2A2306
2.75X16 SIDE LIP	16 (406.4)	2.75 (69.9)	2A3606
3X13 V TREAD CLINCHER	13 (330.2)	3 (76.2)	2A3376
3X13 DUAL RIB CLINCHER	13 (330.2)	3 (76.2)	2A3364
3X13 SINGLE RIB CLINCHER	13 (330.2)	3 (76.2)	2A3367
3X13 SMOOTH CROWN CLINCHER	13 (330.2)	3 (76.2)	2A3306
3X13.25 CHINED REG BASE	13.25 (336.6)	3 (76.2)	2A3308
3X14 V TREAD CLINCHER	14 (355.6)	3 (76.2)	2A3476
3X14 V TREAD REG BASE	14 (355.6)	3 (76.2)	2A3478

Tire Size	Overall Diameter	Section Width	Part Number
	IN (MM)	IN (MM)	
3X16 CHINED	16 (406.4)	3 (76.2)	2A3608
3X16 SMOOTH CROWN CLINCHER	16 (406.4)	3 (76.2)	2A3602
3X16 SMOOTH CROWN REG BASE	16 (406.4)	3 (76.2)	2A3601
4X12 CHEVRON	12 (304.8)	4 (101.6)	2A4645
4X12 DUAL RIB	12 (304.8)	4 (101.6)	2A4268
4X12 SMOOTH CROWN REG BASE	12 (304.8)	4 (101.6)	2A4612
4X12 TRACTION	12 (304.8)	4 (101.6)	2A4282
4X14 V TREAD	14 (355.6)	4 (101.6)	2A4478
4X16 CHEVRON CLINCHER	16 (406.4)	4 (101.6)	2A4644
4X16 CHEVRON REG BASE	16 (406.4)	4 (101.6)	2A4645
4X16 SMOOTH CROWN REG BASE	16 (406.4)	4 (101.6)	2A4612
4X16 SMOOTH CROWN CLINCHER	16 (406.4)	4 (101.6)	2A4615
4X16 TRACTION	16 (406.4)	4 (101.6)	2A4647
4X20 V TREAD CLINCHER	20 (508.0)	4 (101.6)	2A4067
4.5X16 DEEP LIP CHINED	16 (406.4)	4.5 (114.3)	2A5605
4.5X16 SIDE LIP	16 (406.4)	4.5 (114.3)	2A5602
6X12 SMOOTH CROWN CLINCHER	12 (304.8)	6 (152.4)	2A6208
6.5X12 SMOOTH CROWN	12 (304.8)	6.5 (165.1)	2A7208
6.5X12 TRACTION	12 (304.8)	6.5 (165.1)	2A7282



Tubes



TRANS AMERICAN RUBBER

We believe in good old-fashioned customer service and doing the right thing each and every day. We will provide you a quality product, fair prices, and personal customer service. All of our products are manufactured to the highest quality. Our goal is to continuously exceed your expectations.



BUTYL RUBBER TUBES

OTR's TRANS AMERICAN RUBBER BUTYL tubes feature 100% butyl rubber for a premium tube solution. Tubes extend tire life, prevent air leakage, and add weight for improved traction. Butyl provides distinct advantages for agricultural equipment:

- Improved shock absorption and ride comfort.
- Excellent weatherability; resistant to heat, moisture, and chemical attack.
- Durability; resistant to flexing, abrasion, and tearing.

We offer 5-Star rated tubes for rear farm tires, using premium grade materials with a thickness optimized for heavy-duty use. This ensures tubes are durable and long-lasting. The area around the valve stem is reinforced so the stem will not pull out when subjected to forces generated by high-horsepower tractors and/or caused by low air pressure. Stems are constructed in brass so they will not corrode. As a result, 5-Star rated tubes are preferred by customers using tractors, sprayers, and tilling equipment.

Tube Size	Valve	Box Quantity	Part Number	Box Quantity	Part Number
		STANDARD	STANDARD	5-STAR PREMIUM	5-STAR PREMIUM
4.00/5.00-15	TR15	14	5B01NB	-	-
11L-15/16	TR15CW	14	5B02	-	-
11L-15/16	TR15	14	5B05	-	-
12.5L-15/16	TR15CW	10	5B11	-	-
7.50-17/18	TR15	12	5B15	-	-
19.0/45-17	TR15	6	5B16	-	-

Tube Size	Valve	Box Quantity	Part Number	Box Quantity	Part Number
		STANDARD	STANDARD	5-STAR PREMIUM	5-STAR PREMIUM
BUTYL RUBBER TUBES CONTINUED					
4.00-19	TR15	12	5B17NB	-	-
750/825-20	TR15CW	9	5B33	-	-
7.50/8.25-20	TR15	9	5B35	-	-
9.00/10.00-20	TR15	7	5B36	-	-
1000/1100-16	TR15CW	10	5B38	-	-
11.00-16	TR150	10	5B42	-	-
14L-16.1	TR15CW	8	5B44	-	-
11LR14	TR13	14	5R00	-	-
7.5L/9.5LR14/15	TR13	16	5R02	-	-
5.50/6.00R15/16	TR15	20	5R03	-	-
7.5L/9.5LR14/15	TR218A	16	5R07	-	-
11L/12.5LR15/16	TR15	14	5R10	-	-
31X13.50/15.50R15	TR15	7	5R13	-	-
11L/12.5LR15/16	TR218A	14	5R15	-	-
10/11.00R15/16	TR15	10	5R18	-	-
10/11.00R15/16	TR218A	10	5R20	-	-
13.6/14LR16.1	TR15	8	5R21	-	-
13.6/14LR16.1	TR218A	8	5R24	-	-
16.5/18.4R16.1	TR218A	6	5R25	-	-
18.4/19.5/21.5LR16.1	TR218A	3	5R26	-	-
16.5/18.4R16.1	TR15	6	5R27	-	-
10.5L/12.5LR18/20	TR15	8	5R30	-	-
10.5L/12.5LR18/20	TR218A	8	5R35	-	-
6.00R16(GR16)	TR218A	10	5R45NB	-	-
7.50/9.00R10	TR218A	10	5R60NB	-	-
8.3-24	TR218A	10	6B05	-	-
9.5-24	TR218A	10	6B10	-	-
11.2/12.4-24	TR218A	5	6B15	-	-
19.5L-24	TR218A	3	6B20	-	-
13.6/14.9-26/28	TR218A	4	6B25	-	-
11.2/12.4-28	TR218A	5	6B30	-	-
16.9/14-30	TR218A	3	6B35	-	-
18.4-30	TR218A	3	6B40	-	-
16.9/14-34	TR218A	3	6B45	-	-
18.4-34	TR218A	3	6B50	-	-
11.2-38	TR218A	3	6B53	-	-
18.4/15-38	TR218A	2	6B60	-	-
18.4-42	TR218A	1	6B65	-	-
13.6R20	TR218A	7	6R00	-	-



Tube Size	Valve	Box Quantity		Part Number	
		STANDARD	STANDARD	5-STAR PREMIUM	5-STAR PREMIUM
BUTYL RUBBER TUBES CONTINUED					
18.4/19.5/21LR24	TR218A	3	6R05	-	-
7.5/8.3/9.5R24	TR218A	5	6R10NB	-	-
11.2/12.4R24	TR218A	5	6R13	-	-
13.6/14.9R24	TR218A	5	6R16	-	-
16.9/17.5LR24	TR218A	3	6R19	-	-
23.1R26	TR218A	2	6R22	2	6PR22
11.2/12.4R26	TR218A	5	6R26	-	-
11.2/12.4R28	TR218A	5	6R27	-	-
13.6/14.9R26/28	TR218A	4	6R28	-	-
16.9/18.4R26/28	TR218A	3	6R32	4	6PR32
28LR26	TR218A	1	6R34	1	6PR34
16.9/18.4R30	TR218A	2	6R36	2	6PR36
14.9R30	TR218A	4	6R38	-	-
23.1R30	TR218A	2	6R40	1	6PR40
13.6R-34/36	TR218A	4	6R41	-	-
9.5/11.2R32/34	TR218A	5	6R42	-	-
24.5R32	TR218A	1	6R44	1	6PR44
14.9R34	TR218A	3	6R46	-	-
14.9R36	TR218A	4	6R47	-	-
16.9/18.4R34	TR218A	2	6R48	3	6PR48
11.2/12.4R36/38	TR218A	3	6R49	-	-
13.6/14.9R36/38	TR218A	3	6R52	3	6PR52
13.6/14.9R38	TR218A	3	6R53	-	-
15.5R38	TR218A	3	6R55	2	6PR55
16.9/18.4R38	TR218A	2	6R59	2	6PR59
710/70R38	TR218A	-	-	1	6PR60
20.8R38	TR218A	2	6R61	2	6PR61
20.8R34	TR218A	2	6R64	2	6PR64
30.5LR32	TR218A	1	6R67	1	6PR67
9.5/11.2/12.4R42	TR218A	5	6R68	4	6PR68
18.4/20.8R42	TR218A	2	6R70	1	6PR70
12.4/13.6/14.9R46	TR218A	3	6R77	-	-
14.9R46	TR218A	-	-	1	6PR80
16.9/18.4R46	TR218A	2	6R85-2	2	6PR85
9.5R48	TR218A	-	-	5	6PR91NB
270/95R52/54	TR218A	-	-	1	6PR94
16.9/18.4R50	TR218A	-	-	1	6PR96



The quality of the Trans American Rubber 5-STAR PREMIUM Tube surpasses any other farm tube in the market.

–M.S., Colorado



NATURAL RUBBER TUBES

OTR's TRANS AMERICAN RUBBER NATURAL RUBBER inner tubes are desirable for certain applications due to their inherent balance of physical properties essential for high-performance engineering applications. High strength, long fatigue life, excellent elasticity, and good temperature flexibility are just some of the attributes that end-users can expect.

Tube Size	Valve	Box Quantity	Part Number
23.1R-34	TR-218A	1	6R20NR
23.1LR-26	TR-218A	2	6R22NR
28LR-26	TR-218A	1	6R34NR
30.5LR-32	TR-218A	1	6R67NR
16.9/18.4R-26	TR-218A	3	6R32NR
16.9/18.4R-30	TR-218A	4	6R36NR
16.9/18.4R-34	TR-218A	3	6R48NR
24.5R-32	TR-218A	2	6R44NR
16.9R-38	TR-218A	3	6R58NR
18.4R-38	TR-218A	3	6R59NR
20.8R-38	TR-218A	2	6R61NR
710/70R-38 650/85R-38	TR-218A	2	6R60NR
20.8R-42	TR-218A	1	6R70NR
20.8R-34	TR-218A	3	6R64NR
710/70R-42	TR-218A	1	6R71NR



Wheels



STANDARD IMPLEMENT WHEELS

OTR offers a variety of standard steel wheels for farm implements covering tires from 6.70 to 26 inches for wheels that are 12 to 28 inches. Available colors include white, black, red, cream, silver, and gray. Available bolt patterns of 5 on 5.5, 6 on 6, 8 on 8, and 6-clamp. Offsets support fitments for popular machines and tires. OTR can also provide tire and wheel assemblies.



Wheel Size	Fits Tire Size	Diameter	Depth	Bolt Pattern	Offset	Color	Part Number
		IN (MM)	IN (MM)	IN (MM)	IN (MM)		
12X10.50	26X12-12	12 (304.8)	10.5 (266.7)	6 ON 6 (6 ON 152.4)	0	WHITE	W12105033
14X8	9.5-11L14	14 (355.6)	8 (203.2)	6 ON 6 (6 ON 152.4)	1.125 (28.6)	CREAM	W148005
15X10	12.5L15 29X12.50-15	15 (381.0)	10 (254.0)	6 ON 6 (6 ON 152.4)	-0.88 (-22.4)	BLACK	W1510012
15X10	12.5L15 29X12.50-15	15 (381.0)	10 (254.0)	6 ON 6 (6 ON 152.4)	0.89 (22.6)	WHITE	W1510013
15X10	12.5L15 29X12.50-15	15 (381.0)	10 (254.0)	6 ON 6 (6 ON 152.4)	-1.6 (-40.6)	CREAM	W1510014
15X10	12.5L15 29X12.50-15	15 (381.0)	10 (254.0)	8 ON 8 (8 ON 203.2)	-1.6 (-40.6)	CREAM	W1510015
15X5	6.70-15	15 (381.0)	5 (127.0)	5 ON 5.5 (5 ON 139.7)	-0.25 (-6.4)	SILVER	W155009
15X5	6.70-15	15 (381.0)	5 (127.0)	5 ON 5.5 (5 ON 139.7)	-0.25 (-6.4)	GRAY	W155010
15X5	6.70-15	15 (381.0)	5 (127.0)	5 ON 5.5 (5 ON 139.7)	-0.25 (-6.4)	BLACK	W155012
15X5	6.70-15	15 (381.0)	5 (127.0)	5 ON 5.5 (5 ON 139.7)	-0.25 (-6.4)	WHITE	W155008

Wheel Size	Fits Tire Size	Diameter	Depth	Bolt Pattern	Offset	Color	Part Number
		IN (MM)	IN (MM)	IN (MM)	IN (MM)		
STANDARD IMPLEMENT WHEELS <i>CONTINUED</i>							
15X5	6.70-15	15 (381.0)	5 (127.0)	6 ON 6 (6 ON 152.4)	1.125/-1.6 (28.6/-40.6)	CREAM	W155007
15X6	7.60-15	15 (381.0)	6 (152.4)	6 ON 6 (6 ON 152.4)	1.125 (28.6)	CREAM	W156009
15X8	11L15	15 (381.0)	8 (203.2)	6 ON 6 (6 ON 152.4)	2 (50.8)	WHITE	W158013
15X8	11L15	15 (381.0)	8 (203.2)	6 ON 6 (6 ON 152.4)	1.125/-1.6 (28.6/-40.6)	CREAM	W158010
15X8	11L15	15 (381.0)	8 (203.2)	8 ON 8 (8 ON 203.2)	1.125/-1.6 (28.6/-40.6)	CREAM	W158011
16X6	7.50-16	16 (406.4)	6 (152.4)	6 ON 6 (6 ON 152.4)	1.08 (27.4)	SILVER	W166012
16X6	7.50-16	16 (406.4)	6 (152.4)	6 ON 6 (6 ON 152.4)	1.125/-1.6 (28.6/-40.6)	CREAM	W166008
16X6	7.50-16	16 (406.4)	6 (152.4)	8 ON 8 (8 ON 203.2)	1.12 (28.4)	BLACK	W166014
16X8	11L16	16 (406.4)	8 (203.2)	6 ON 6 (6 ON 152.4)	-1.6 (-40.6)	CREAM	W168003
16.5X9.75	12-16.5	16.5 (419.1)	9.75 (247.7)	8 ON 8 (8 ON 203.2)	1.09 (27.7)	BLACK	W165975013
17.5X10.5	14-17.5	17.5 (444.5)	10.5 (266.7)	6 ON 6 (6 ON 152.4)	1.12 (28.4)	RED	W175105008
17.5X10.5	14-17.5	17.5 (444.5)	10.5 (266.7)	8 ON 8 (8 ON 203.2)	-1.49 (-37.8)	SILVER	W175105009
17.5X10.5	14-17.5	17.5 (444.5)	10.5 (266.7)	8 ON 8 (8 ON 203.2)	-1.5 (-38.1)	SILVER	W175105003
19.5X6	225R19.5 70R19.5	19.5 (495.3)	6 (152.4)	8 ON 8 (8 ON 203.2)	0.38 (9.7)	CREAM	W1956003
22.5X8.25	11R22.5	22.5 (571.5)	8.25 (209.6)	8 ON 8 (8 ON 203.2)	0.75 (19.1)	CREAM	W225825016
22.5X8.25	11R22.5	22.5 (571.5)	8.25 (209.6)	8 ON 8 (8 ON 203.2)	-1.5 (-38.1)	CREAM	W225825014
22.5X11.75	315R22.5 80R22.5	22.5 (571.5)	11.75 (298.5)	8 ON 8 (8 ON 203.2)	-0.5 (-12.7)	CREAM	W2251175009
22.5X13	385R22.5 445R22.5	22.5 (571.5)	13 (330.2)	8 ON 8 (8 ON 203.2)	1.125 (28.6)	CREAM	W22513009
22.5X13	385R22.5 445R22.5	22.5 (571.5)	13 (330.2)	8 ON 8 (8 ON 203.2)	-1.5 (-38.1)	CREAM	W22513008
28X10	11.2-28 12.4-28	28 (711.2)	10 (254.0)	6 CLAMP	-	SILVER	W2810003
28X12	13.6-28 14.9-28	28 (711.2)	12 (304.8)	6 CLAMP	-	SILVER	W2812005



PIVOT WHEELS

OTR offers a range of steel pivot wheels for irrigation equipment in popular sizes, with 8- and 9-hole and 8-on-8 bolt patterns and common offsets. Reverse mount units are available, along with wheel color options. Standard units are galvanized for corrosion protection. Additionally, select wheels feature valve guards.



Wheel Size	Fits Tire Size	Diameter	Depth	Bolt Pattern	Offset	Color	Part Number
		IN (MM)	IN (MM)	IN (MM)	IN (MM)		
22.5X8.25	11-22.5	22.5 (571.5)	8.25 (209.6)	8 ON 8 (8 ON 203.2)	-2 (-50.8)	SILVER	W225825002
24X8	11.2/14.9-24	24 (609.6)	8 (203.2)	8 ON 8 (8 ON 203.2)	-2 (-50.8)	GALVANIZED	W248004*
24X10	11.2/14.9-24	24 (609.6)	10 (254.0)	8 ON 8 (8 ON 203.2)	-2 (-50.8)	GALVANIZED	W2410001*
24X10	11.2/14.9-24	24 (609.6)	10 (254.0)	8 ON 8 (8 ON 203.2)	0	GALVANIZED	W2410012
24X10	11.2/14.9-24	24 (609.6)	10 (254.0)	9 ON 9.5 (9 ON 241.3)	1 (25.4)	YELLOW	W2410003
24X10	16.9-24	24 (609.6)	10 (254.0)	8 ON 8 (8 ON 203.2)	-2.93 (-74.4)	YELLOW	W2410010
24X12	14.9/16.9-24	24 (609.6)	12 (304.8)	8 ON 8 (8 ON 203.2)	-2 (-50.8)	GALVANIZED	W2412011*
24X15	16.9-24	24 (609.6)	15 (381.0)	8 ON 8 (8 ON 203.2)	-3.5 (-88.9)	GALVANIZED	W2415011
24.5X8.25	11-24.5	24.5 (622.3)	8.25 (209.6)	8 ON 8 (8 ON 203.2)	2 (50.8)	SILVER	W245825002
24.5X8.25	11-24.5	24.5 (622.3)	8.25 (209.6)	9 ON 9.5 (9 ON 241.3)	-7.9 (-200.7)	YELLOW	W245825009
38X10	11.2/12.4/13.6-38	38 (965.2)	10 (254.0)	9 ON 9.5 (9 ON 241.3)	1.75 (44.5)	YELLOW	W3810003
38X10	11.2/12.4/13.6-38	38 (965.2)	10 (254.0)	8 ON 8 (8 ON 203.2)	2 (50.8)	GALVANIZED	W3810015*
38X12	11.2/12.4/13.6-38	38 (965.2)	12 (304.8)	8 ON 8 (8 ON 203.2)	TBA	GALVANIZED	W3812002

*INCLUDES VALVE GUARD.

Assemblies

CLOSING WHEEL ASSEMBLIES

Closing wheel assemblies include a tire type that is designed to close the seed furrow when planting. A wide variety is available to best match the closing wheel to the soil conditions, planting style, residue management practices, and crops being planted.



Wheel Size	Tire	Rim Type	Diameter IN (MM)	Depth IN (MM)	Bearing IN (MM)	Part Number
1X9	V TREAD CLINCHER	NYLON	9 (228.6)	1 (25.4)	1.57 (40.0)	A102769-BP
1X10	SMOOTH CROWN CLINCHER	STEEL	10 (254.0)	1 (25.4)	1.57 (40.0)	A102244-86
1X10	SOLID TAPERED	STEEL	10 (254.0)	1 (25.4)	1.57 (40.0)	A111445-86
1X12	SMOOTH CROWN TIRE	NYLON	12 (304.8)	1 (25.4)	GROOVE WATERPUMP	A122104-BP
1X12	SMOOTH CROWN TIRE	NYLON	12 (304.8)	1 (25.4)	X-HOLE WATERPUMP	A122704-BP



PRESS WHEEL ASSEMBLIES

OTR's selection of press wheel assemblies are designed to provide the right amount of compaction to best embed seeds during planting. Proprietary compounds enhance tire life by reducing stubble damage and ozone breakdown.



Wheel Size	Tire	Rim Type	Diameter	Depth	Bearing	Part Number
			IN (MM)	IN (MM)	IN (MM)	
1.25X13.5	WEDGE	NYLON	13.5 (342.9)	1.25 (31.8)	1.57 (40.0)	A122379-BP
2X13	SMOOTH CROWN CLINCHER	NYLON	13 (330.2)	2 (50.8)	1.57 (40.0)	A232732-BP
2X13	SMOOTH CROWN CLINCHER	NYLON	13 (330.2)	2 (50.8)	GROOVE WATERPUMP	A232832-BP
2X13	SMOOTH CROWN CLINCHER	STEEL	13 (330.2)	2 (50.8)	GROOVE WATERPUMP	A213636-86
2X13	SMOOTH CROWN CLINCHER	STEEL	13 (330.2)	2 (50.8)	1.77 (45.0)	A213536-86
3X13	SINGLE RIB	NYLON	13 (330.2)	3 (76.2)	1.57 (40.0)	A332356-BP
3X13	V TREAD	STEEL	13 (330.2)	3 (76.2)	1.57 (40.0)	A313878-86
3X13	DUAL RIB CLINCHER	STEEL	13 (330.2)	3 (76.2)	1.57 (40.0)	A313466-86
4X12	CHEVRON	NYLON	12 (304.8)	4 (101.6)	1.57 (40.0)	A412446-BP
4X14	V TREAD	STEEL	14 (355.6)	4 (101.6)	1.57 (40.0)	A414476-86
6X16	SMOOTH CROWN CLINCHER	STEEL	16 (406.4)	6 (152.4)	1.57 (40.0)	A616406-86
6.5X12	TRACTION	NYLON	12 (304.8)	6.5 (165.1)	1.57 (40.0)	A422382-BP

GAUGE WHEEL ASSEMBLIES

OTR's gauge wheel assemblies are designed to regulate the penetration depth of seeds into the soil. Multiple units are available to fit all major manufacturer's equipment with styles to match various applications.



Wheel Size	Tire	Rim Type	Diameter	Depth	Bearing	Part Number
			IN (MM)	IN (MM)	IN (MM)	
2.5X16	CHINED	STEEL	16 (406.4)	2.5 (63.5)	1.57 (40.0)	A316204-86
4X16	CHEVRON	NYLON	16 (406.4)	4 (101.6)	1.57 (40.0)	A462345-BP
4X16	SMOOTH CROWN CLINCHER	NYLON	16 (406.4)	4 (101.6)	1.57 (40.0)	A462316-86
4.5X16	CHINED	NYLON/ STEEL	16 (406.4)	4.5 (114.3)	1.57 (40.0)	A46P307-93
4.5X16	CHINED	NYLON/ STEEL	16 (406.4)	4.5 (114.3)	X-HOLE WATERPUMP	A462707-97
4.5X16	CHINED	NYLON/ STEEL	16 (406.4)	4.5 (114.3)	GROOVE WATERPUMP	A46P103-86
4.5X16	CHINED	STEEL	16 (406.4)	4.5 (114.3)	1.57 (40.0)	A462307-86
4.5X16	CHINED	STEEL	16 (406.4)	4.5 (114.3)	GROOVE WATERPUMP	A562108-86
4.5X16	CHINED (DEEP LIP)	NYLON/ STEEL	16 (406.4)	4.5 (114.3)	1.57 (40.0)	A467705-86

Custom Engineering

NEW TIRE SOLUTIONS

OTR continues to develop new agriculture tires using advanced technologies with an emphasis on enhancing productivity, utilization, comfort, and safety. One such example (pictured right) features an R1W pattern designed to optimize traction for compact tractors operating on wet soil, while reducing road noise and vibration. Deep angled lugs with sharp cut-offs at the sidewall ensure grip and handling in fields and on slopes. These tires also feature unique rock ejectors and mud breakers, resulting in better cleaning.

Contact OTR to learn more about how to leverage these innovative tires for your applications.



SPECIALTY WHEELS

OTR designs and manufactures custom steel wheels. Examples include:

- Trailer wheels for header transport, baler, and utility applications.
- Custom wheels for small- to medium-sized tractors.
- Cast disc wheels up to 42 inches in diameter for utility tractors producing 130+ horsepower. These wheels fit popular agricultural tires, including low sidewall versions, with designs approved and preferred by OEM customers.



Accessories

BALLAST & COUNTERWEIGHTS

OTR accessories for tractors include ballast and counterweights designed to enhance traction and mobility. Examples include 50- to 500-pound wheel weights for tractors – currently supplied to leading original equipment manufacturers – and a standard 65-pound version for the aftermarket. Also available are 1,500-pound bumper counterweights.



AGRICULTURAL BEARINGS

OEM spec bearings for increased bearing life and reduced downtime.



Bearing Size	Type
IN (MM)	
1.18 (30)	X-HOLE WATERPUMP BEARING
1.18 (30)	X-HOLE WATERPUMP BEARING IN 40MM SLEEVE
1.18 (30)	GROOVE WATERPUMP BEARING
1.18 (30)	GROOVE WATERPUMP BEARING IN 40MM SLEEVE
1.57 (40)	SINGLE-ROW BALL BEARING
1.57 (40)	DOUBLE-ROW BALL BEARING
1.77 (45)	BALL BEARING

Services



MOUNTING & SEQUENCING

In addition to tires and wheels, OTR provides tire and wheel mounting, sequencing, just-in-time delivery, and warehousing for OEM customers. Facilities are located around the world, close to OEM customer locations. Key processes are automated with automatic tire inflation systems that are repeatable and accurate.



TyrLyner®

TyrLyner® is a proprietary rubber urethane securely applied to the inside of a tire's casing to extend life and enhance safe operation. Its "self-healing" technology ensures the tire is sealed when punctured or cut by objects up to ¼-inch diameter. The coating is applied at an OTR facility for original equipment manufacturers and distributors who support fleets and owner-operators engaged in construction work, where downtime is NOT an option.

SUPPLY CHAIN PROTECTION ISO-9001

The Customs-Trade Partnership Against Terrorism (C-TPAT) was created by U.S. Customs and Border Protection (CBP) as a voluntary program for companies that are involved in the global supply chain.

As a C-TPAT partner, we do our part to alleviate supply chain disruption and reduce border delays.



FREQUENTLY ASKED QUESTIONS ABOUT C-TPAT CERTIFICATION:

- **Why does this matter to me?**
Expedited port entry, more accurate delivery schedules, and protecting our borders. Being C-TPAT certified allows our shipping containers to bypass the security-related delays at the ports of entry. Our certification ensures that our supply chain is secure throughout; from the manufacturing facility, through the ports, and on to the final destination.
- **How much time can be saved by being C-TPAT certified?**
There are many factors involved, but the government estimates that non-certified shipments are 3.5 times more likely to be delayed by security inspection. Also, should a C-TPAT certified shipment be randomly chosen for inspection, it is given priority status and is moved to the front of the existing queue for inspection.
- **Is C-TPAT certified easy?**
Actually, it is a very comprehensive process that can take years to complete. There are a series of site visits throughout the supply chain, reference checks, paperwork, fees, and even a personal interview. C-TPAT certified companies must permanently adhere to strict policies in order to maintain certification.



ISO CERTIFICATION

The International Organization for Standardization (ISO) helps to set global standards of excellence for both quality and management systems. Certified companies must undergo rigorous inspections and evaluations to ensure that they adhere to the highest standards.

ISO BENEFITS:

- Consistent product quality.
- Standardized production and record keeping.
- Product dependability.
- Enhanced customer satisfaction.

CONTACT INFORMATION

OEM Inquiries: Contact your local OTR salesperson or email sales@otrwheel.com.

Aftermarket Inquiries: Contact your local OTR salesperson or call 800-833-6309 (east of the Mississippi River) or 888-455-4910 (west of the Mississippi).

Trans American Rubber Tubes, Flaps, or Accessories: Call 800-922-8823 for additional information.

WARRANTY INFORMATION

OTR provides limited warranty coverage for tires, wheels, tracks, and other items in the event of defects in workmanship. You may request a copy of our policy by emailing us at sales@otrwheel.com.

Note that OTR has designated select dealers and distributors to assist with warranty repairs. Contact OTR for more information.

CATALOG DISCLAIMER

Product specifications and information were correct as of the date of this catalog release but are subject to change without notice or obligation. Every effort has been made to ensure the accuracy of this catalog. Consult with your salesperson if you wish to verify data is correct.

ISO 9001: 2015 CERTIFICATION

OTR facilities are ISO 9001: 2015 registered (except for new locations where certifications are in process). ISO ensures consistent product quality, standardization, documentation, and compliance with OEM requirements.

REACH COMPLIANCE

OTR's custom tires for OEMs can be designed with REACH compliance. Consult with your salesperson as needed.



OTR's Commitment:

SOLUTIONS

OTR doesn't just sell tires and wheels, we diagnose problems and provide solutions.

VALUE

OTR optimizes ROI with high performance & value-added services to deliver results.

INNOVATION

OTR has a passion for innovating solutions that exceed customer expectations.

PARTNERSHIP

We're not just a vendor, we're a long-term partner who will support your business.

+1.800.833.6309

www.otrwheel.com



OTR is the operating unit of OTR International, Inc., comprising businesses located in the U.S., Canada, Europe, China, Thailand and Sri Lanka. OTR is a partner company of Owner Resource Group (ORG), LLC.

© 2024 OTR International, Inc. All Rights Reserved. | C-NA-V060424